

# **After Action Review**

## ***BOISE NATIONAL FOREST***

Incident Name: Boulder #092

Date: 7/20/02

CREW: \_\_\_\_\_

Class: C 12 1/2 acres

IC: Rex Miller ICT3

**Participants:**

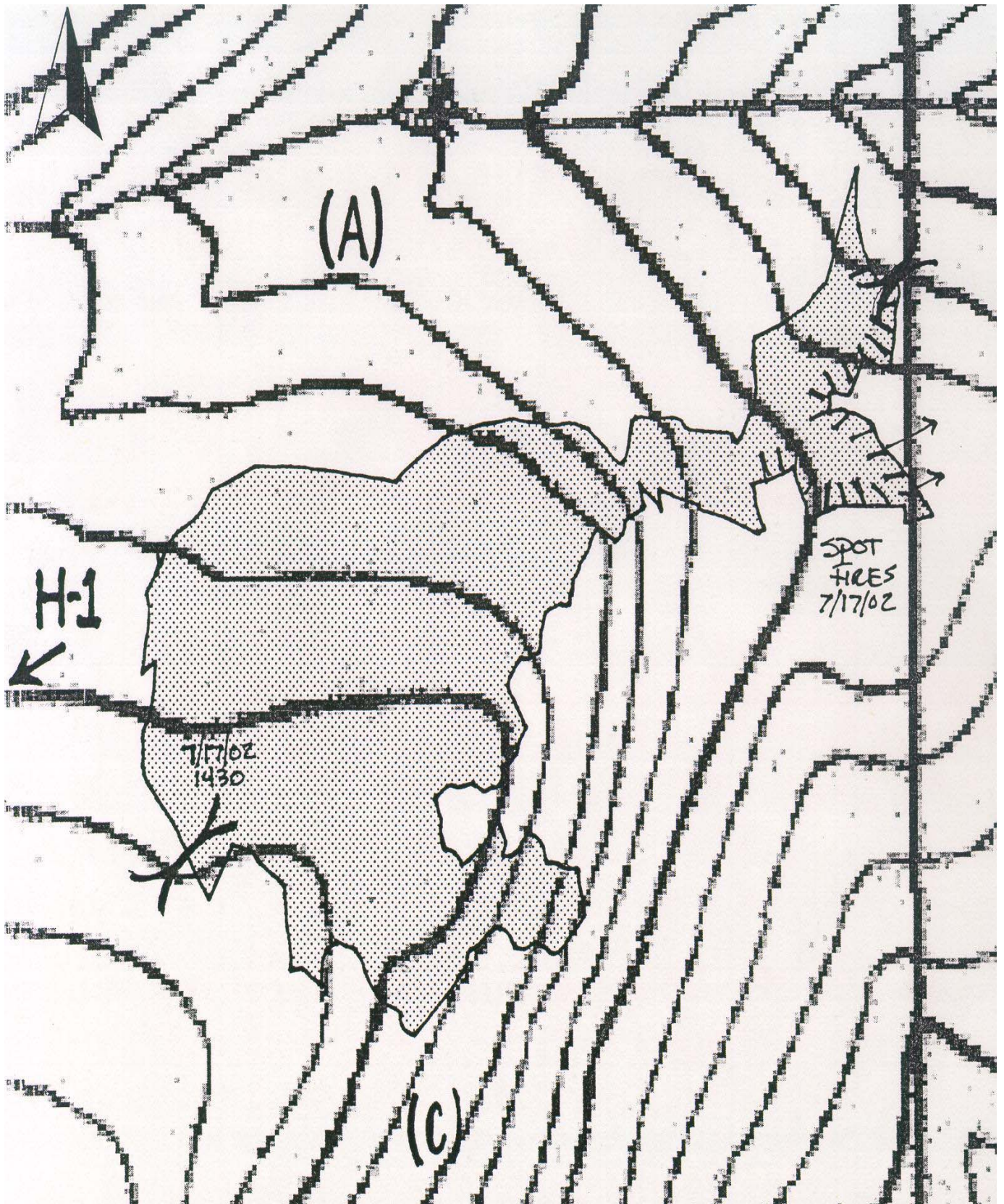
- |                          |           |           |
|--------------------------|-----------|-----------|
| 1. De Dether DIVS        | 8. _____  | 15. _____ |
| 2. Myron Hotinger DIVS   | 9. _____  | 16. _____ |
| 3. _____                 | 10. _____ | 17. _____ |
| 4. Terry Leatherman AFMO | 11. _____ | 18. _____ |
| 5. Ronn Julian DR        | 12. _____ | 19. _____ |
| 6. _____                 | 13. _____ | 20. _____ |
| 7. _____                 | 14. _____ | 21. _____ |

The purpose of this critique is to identify any areas where the Fire Orders, the 18 Fire Situations That Shout Watch Out, or LCES may not have been given proper consideration during the incident.  
Comment where applicable.

Critique Leader Signature  /s/ R F Julian Date  7/20/02

Reviewed By: \_\_\_\_\_ Date \_\_\_\_\_

**Diagram of fire:**



## *After Action Review*

### **What was planned?**

Review the primary objectives and expected action plan.

Contain/control fire with minimal spread

---

Personnel and public safety was single most important criteria

---

Costs to be managed in accordance with safety and spread objectives

---

### **What actually happened?**

Review the day's actions:

- Identify and discuss effective and non-effective performance.

Good fireline personnel attention to safety. East flank of fire was hazardous and treacherous terrain. There were no accidents.

---

Heavy ground fuels and multiple snags were present. Precautions were evident that snags had been identified and or felled.

---

Good use of lookouts that were positioned to see fire from multiple locations.

---

- Identify barriers that were encountered and how they were handled.

Team was dispatched w/out SOFR. Follow-up order resulted in filling for second shift.

---

Signs to alert public on 446 road of fire traffic should have been used.

---

All crew supervisors did not have copies of the pocket card for the BNF north zone. DIVS were making a solid attempt to distribute cards and mention it in briefings. Contract crews seemed to know the least about pocket cards.

---

- Discuss all actions that were not standard operation procedure, or those that presented safety problems.

Lower pump placement was not most desirable. Output line was 180 degrees from direction of flow. Pump was set on sloping rocks and vibration caused it to slip position.

---

Movement made it impossible to retain apparatus in catchment basin and on absorbent pad.

---

Some firefighters were wearing KEVLAR firepants (not approved).

---

**Why did it happen?**

Discuss the reasons for ineffective or unsafe performance. Concentrate on WHAT, not WHO, is right.

---

---

---

---

**What can we do next time?**

Determine lessons learned and how to apply them in the future.

Procure a set of signs that are in district or zone fire cache and can be used on multiple incidents to alert public on roadways.

Be certain experienced personnel set or direct placement of pumps in waterways.

---

---

## ***FIRE ORDERS***

OBSERVED	NOT OBSERVED	FIRE ORDERS
X		F. Fight fire aggressively but provide for safety first.
X		I. Initiate all action based on current and expected fire behavior.
X		R. Recognize current weather conditions and obtain forecasts.
X		E. Ensure instructions are given and understood.
X		O. Obtain current information on fire status.
X		R. Remain in communication with crew members, your supervisor and adjoining forces.
X		D. Determine safety zones and escape routes.
X		E. Establish lookouts in potentially hazardous situations.
X		R. Retain control at all times.
X		S. Stay alert, keep calm, think clearly, act decisively.

## ***18 FIRE SITUATIONS THAT SHOUT "WATCH OUT"***

OBSERVED	NOT OBSERVED	SITUATION
X		1. Fire not scouted and sized up.
X		2. In country not seen in daylight.
X		3. Safety zones and escape routes not identified.
X		4. Unfamiliar with weather and local factors influencing fire behavior.
X		5. Uninformed on strategy, tactics and hazards.
X		6. Instructions and assignments not clear.
X		7. No communication link with crew members/supervisor.
X		8. Constructing line without safe anchor point.
X		9. Building fireline downhill with fire below.
X		10. Attempting frontal assault on fire.
X		11. Unburned fuel between you and the fire.
X		12. Cannot see main fire, not in contact with anyone who can.
X		13. On a hillside where rolling material can ignite fuel below.
X		14. Weather is getting hotter and drier.
X		15. Wind increases and/or changes direction.
X		16. Getting frequent spot fires across line.
X		17. Terrain and fuels make escape to safety zones difficult.
X		18. Taking a nap near the fireline.

## *LCES*

<b>ELEMENT</b>	<b>FEATURE</b>	<b>YES</b>	<b>NO</b>
<b><i>LOOKOUTS</i></b>	EXPERIENCED/COMPETENT/TRUSTED	X	
	ENOUGH LOOKOUTS AT GOOD VANTAGE POINTS	X	
	KNOWLEDGE OF CREW LOCATIONS	X	
	KNOWLEDGE OF ESCAPE AND SAFETY LOCATIONS	X	
	KNOWLEDGE OF DISENGAGEMENT TRIGGER POINTS	X	
	MAP/WEATHER KIT/WATCH/IAP	X	
<b><i>COMMUNICATIONS</i></b>	RADIO FREQUENCIES CONFIRMED	X	
	BACKUP PROCEDURES AND CHECK-IN TIMES ESTABLISHED	X	
	PROVIDE UPDATED ON ANY SITUATION CHANGE	X	
	SOUND ALARM EARLY, NOT LATE	X	
<b><i>ESCAPE ROUTES</i></b>	MORE THAN ONE ESCAPE ROUTE	X	
	AVOID UPHILL ESCAPE ROUTES	X	
	SCOUTED: LOOSE SOILS/ROCKS/VEGETATION	X	
	TIMED: SLOWEST PERSON/FATIGUE AND TEMPERATURE FACTORS	X	
	MARKED: FLAGGED FOR DAY OR NIGHT	X	
	EVALUATE: ESCAPE TIME VS. RATE OF SPREAD	X	
	VEHICLES PARKED FOR ESCAPE	N/A	
<b><i>SAFETY ZONES</i></b>	SURVIVABLE WITHOUT A FIRE SHELTER	X	
	BACK INTO CLEAN BURN	X	
	NATURAL FEATURES: ROCK AREAS/WATER/MEADOWS	X	
	CONSTRUCTED SITES: CLEARCUTS/ROADS/HELISPOTS	X	
	SCOUTED FOR SIZE AND HAZARDS	X	
	LARGER SAFETY ZONE: UPSLOPE/DOWNWIND/HEAVY FUELS	X	