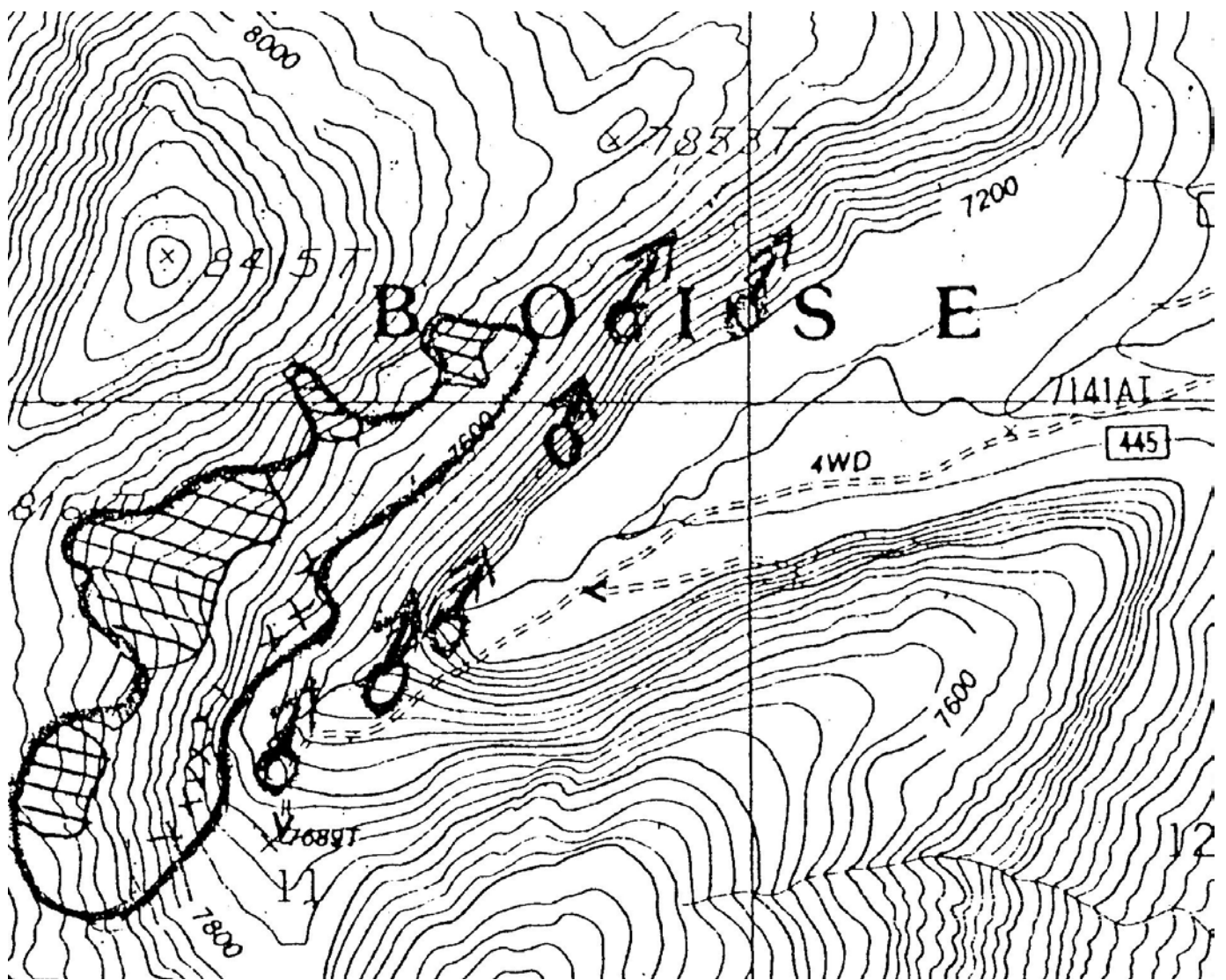


Diagram of fire:



After Action Review

What was planned?

Review the primary objectives and expected action plan.

Contain fire without additional spread. Mop all spots. Mop inside perimeter 100%.

What actually happened?

Review the day's actions:

- Identify and discuss effective and non-effective performance.

Fire was accessible by foot from spike camp along 579 road. Approached fire from downslope.

DIVS Briggs was first shift on fire. Fire had been staffed four (4) previous shifts.

DIVS was briefing incoming Boise IHC

DIVS had two questions. Was dipping by helicopters from Johnson Creek acceptable?

Could crews have warming fires at spike camp. Answer to both was yes.

- Identify barriers that were encountered and how they were handled.
-
-
-

- Discuss all actions that were not standard operation procedure, or those that presented safety problems.

I did not walk the line and view operations. It is impossible to rate 10, 18 and LCES as a result.

Why did it happen?

Discuss the reasons for ineffective or unsafe performance. Concentrate on WHAT, not WHO, is right.

What can we do next time?

Determine lessons learned and how to apply them in the future.

FIRE ORDERS

| OBSERVED | NOT OBSERVED | FIRE ORDERS |
|----------|--------------|-------------------------------------------------------------------------------------|
| | | F. Fight fire aggressively but provide for safety first. |
| | | I. Initiate all action based on current and expected fire behavior. |
| | | R. Recognize current weather conditions and obtain forecasts. |
| | | E. Ensure instructions are given and understood. |
| | | O. Obtain current information on fire status. |
| | | R. Remain in communication with crew members, your supervisor and adjoining forces. |
| | | D. Determine safety zones and escape routes. |
| | | E. Establish lookouts in potentially hazardous situations. |
| | | R. Retain control at all times. |
| | | S. Stay alert, keep calm, think clearly, act decisively. |

18 FIRE SITUATIONS THAT SHOUT "WATCH OUT"

| OBSERVED | NOT OBSERVED | SITUATION |
|----------|--------------|-------------------------------------------------------------------------|
| | | 1. Fire not scouted and sized up. |
| | | 2. In country not seen in daylight. |
| | | 3. Safety zones and escape routes not identified. |
| | | 4. Unfamiliar with weather and local factors influencing fire behavior. |
| | | 5. Uninformed on strategy, tactics and hazards. |
| | | 6. Instructions and assignments not clear. |
| | | 7. No communication link with crew members/supervisor. |
| | | 8. Constructing line without safe anchor point. |
| | | 9. Building fireline downhill with fire below. |
| | | 10. Attempting frontal assault on fire. |
| | | 11. Unburned fuel between you and the fire. |
| | | 12. Cannot see main fire, not in contact with anyone who can. |
| | | 13. On a hillside where rolling material can ignite fuel below. |
| | | 14. Weather is getting hotter and drier. |
| | | 15. Wind increases and/or changes direction. |
| | | 16. Getting frequent spot fires across line. |
| | | 17. Terrain and fuels make escape to safety zones difficult. |
| | | 18. Taking a nap near the fireline. |

LCES

| ELEMENT | FEATURE | YES | NO |
|------------------------------|-------------------------------------------------------|------------|-----------|
| <i>LOOKOUTS</i> | EXPERIENCED/COMPETENT/TRUSTED | | |
| | ENOUGH LOOKOUTS AT GOOD VANTAGE POINTS | | |
| | KNOWLEDGE OF CREW LOCATIONS | | |
| | KNOWLEDGE OF ESCAPE AND SAFETY LOCATIONS | | |
| | KNOWLEDGE OF DISENGAGEMENT TRIGGER POINTS | | |
| | MAP/WEATHER KIT/WATCH/IAP | | |
| <i>COMMUNICATIONS</i> | RADIO FREQUENCIES CONFIRMED | | |
| | BACKUP PROCEDURES AND CHECK-IN TIMES ESTABLISHED | | |
| | PROVIDE UPDATED ON ANY SITUATION CHANGE | | |
| | SOUND ALARM EARLY, NOT LATE | | |
| <i>ESCAPE ROUTES</i> | MORE THAN ONE ESCAPE ROUTE | | |
| | AVOID UPHILL ESCAPE ROUTES | | |
| | SCOUTED: LOOSE SOILS/ROCKS/VEGETATION | | |
| | TIMED: SLOWEST PERSON/FATIGUE AND TEMPERATURE FACTORS | | |
| | MARKED: FLAGGED FOR DAY OR NIGHT | | |
| | EVALUATE: ESCAPE TIME VS. RATE OF SPREAD | | |
| | VEHICLES PARKED FOR ESCAPE | | |
| <i>SAFETY ZONES</i> | SURVIVABLE WITHOUT A FIRE SHELTER | | |
| | BACK INTO CLEAN BURN | | |
| | NATURAL FEATURES: ROCK AREAS/WATER/MEADOWS | | |
| | CONSTRUCTED SITES: CLEARCUTS/ROADS/HELISPOTS | | |
| | SCOUTED FOR SIZE AND HAZARDS | | |
| | LARGER SAFETY ZONE: UPSLOPE/DOWNWIND/HEAVY FUELS | | |