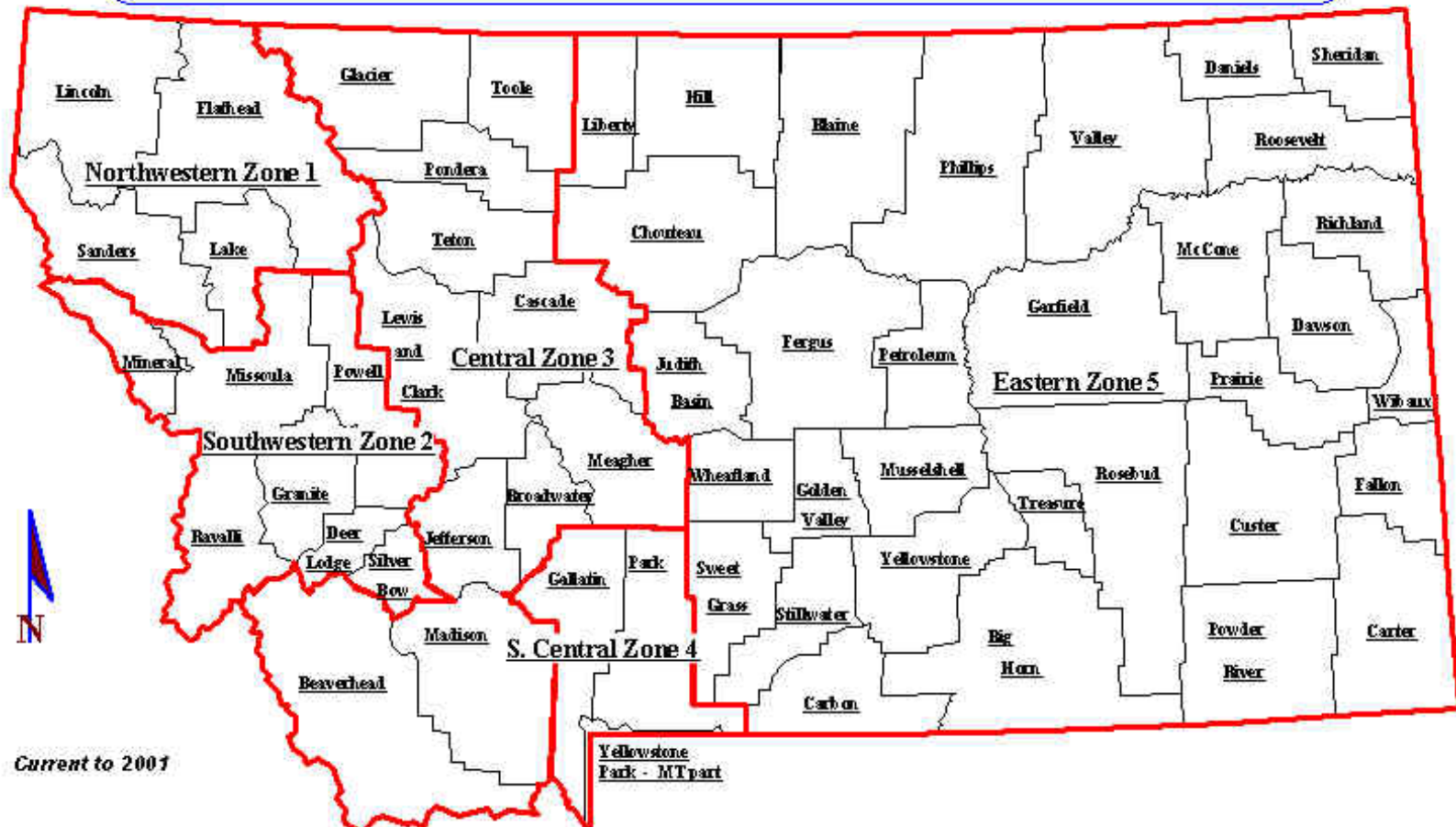


APPENDIX A: MAP

Zone Mobilization Plan Boards

ZONE FIRE MOBILIZATION BOARDS

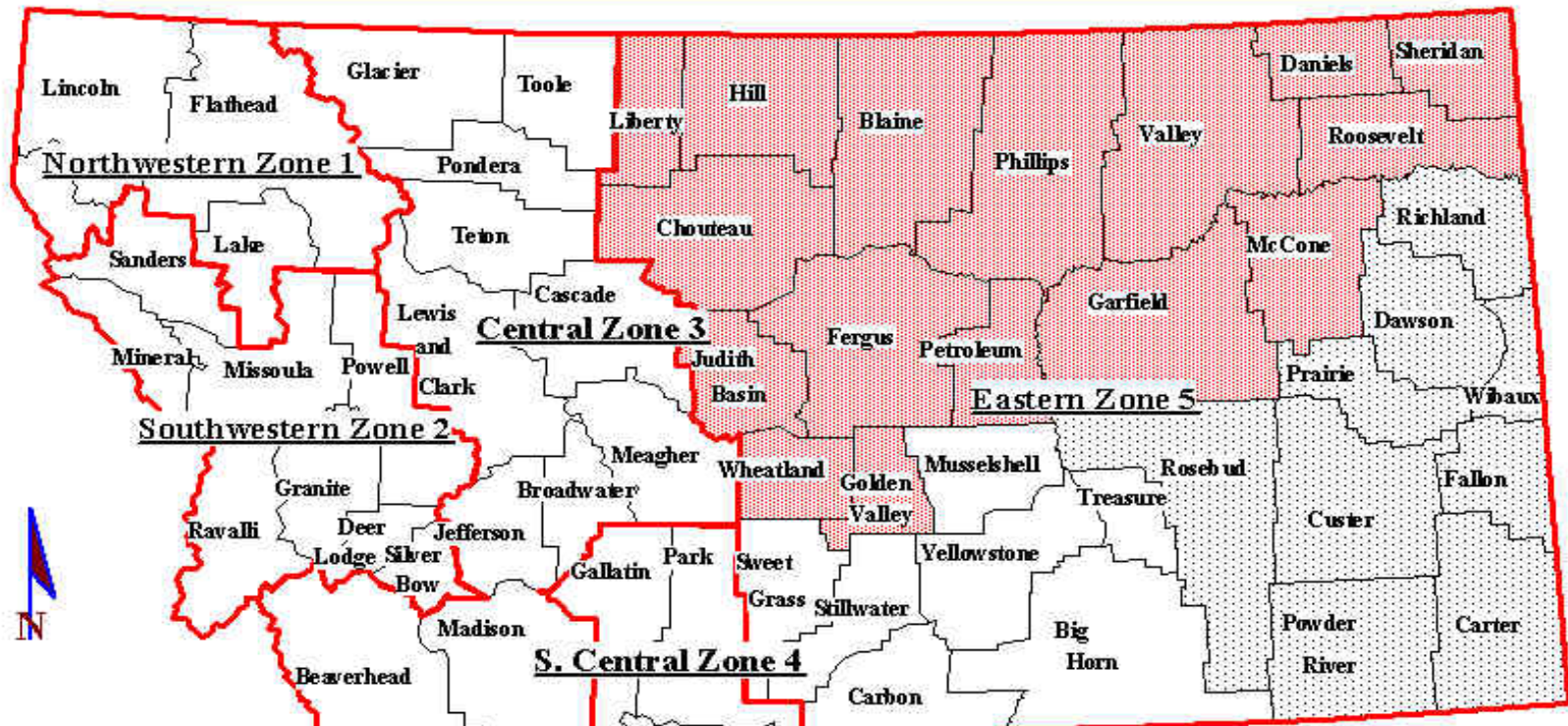


	State Board	Zone 1	Zone 2	Zone 3	Zone 4	Zone 5
<u>DNRC Representative</u>	Sandra O'Bryant	Wally Benett	Steve Holden	Greg Morris	Diana Martin	Darrell Kurk Ray Lundby Jerry Buhre
<u>Fire Warden Rep.</u>	Brett Waters	Randy Sutton	Gordon Geiser	John Allhands	Bob Fry	Clark Kelly Tim Crosmer Brent Christopherson
<u>Fire Chief Rep.</u>	Jess Mickelson	Gary Mahugh	Scott Waldron Mike Doto - Alt	Steve Larson Roy Cornell - Alt	Brett Waters Bryan Connelly - Alt	Mary Jochems
<u>Contractor Rep.</u>			Cal Alsbury	Dick Van Auken Duane Turk	Judy Story	

APPENDIX B: MAP

Zone Mobilization/Dispatch System

ZONE INTERAGENCY DISPATCH SYSTEM



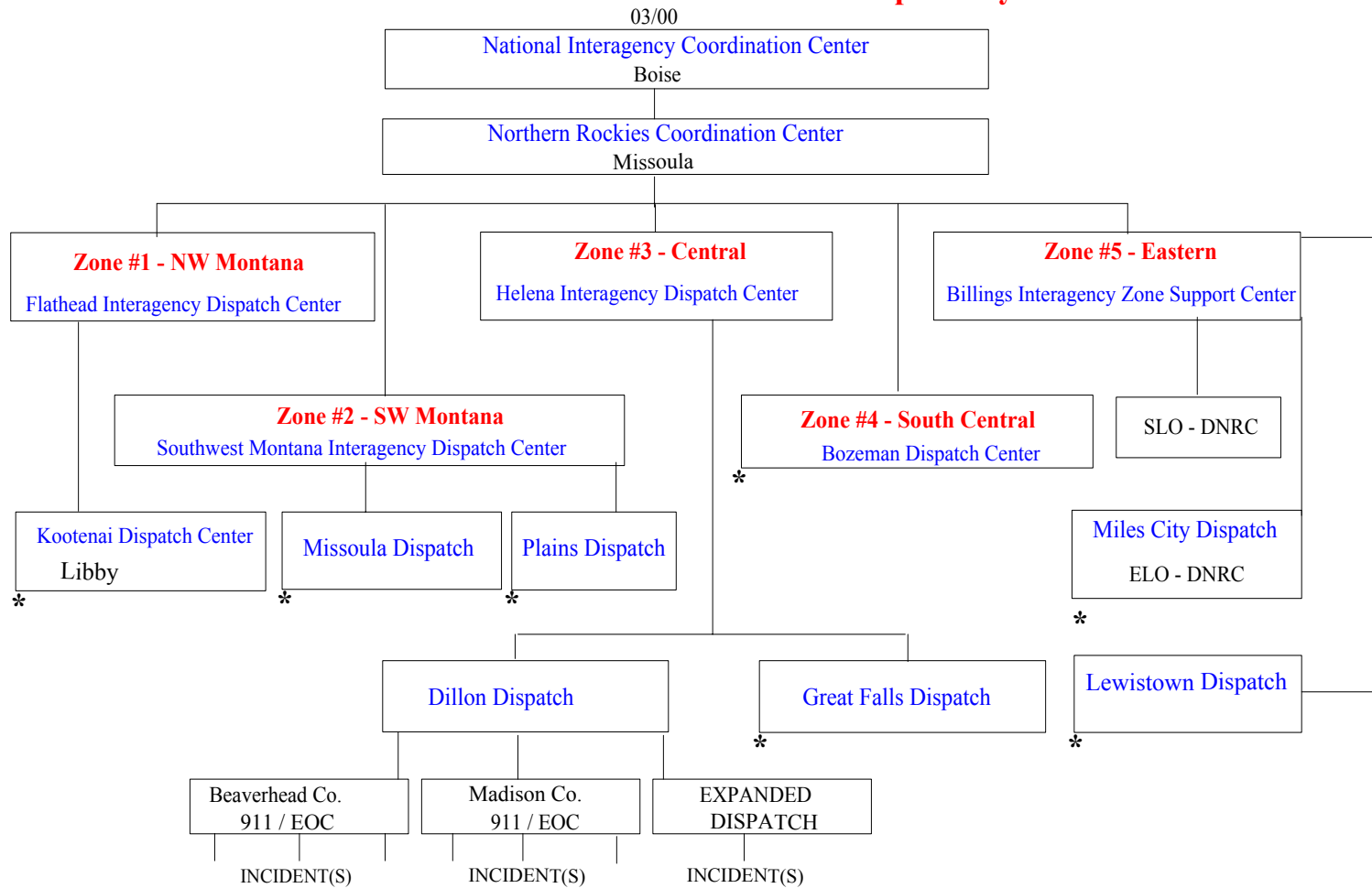
Current - 2001

Zone 1	Zone 2	Zone 3	Zone 4	Zone 5
<u>Flathead Supt/Disp</u> Flathead Co. Lake Co.	<u>SMICC Support</u> Powell Co. Mineral Co. * Ravalli Co. Granite Co. Deer Lodge Co. Silver Bow Co.	<u>Helena Supt/Disp</u> Lewis & Clark Co. Meagher Co. Broadwater Co. Jefferson Co.	<u>Bozeman Supt/Disp</u> Gallatin Co. Park Co.	<u>Billings Support</u> Southern L.O. - DNRC SLO Counties
<u>Kootenai Dispatch</u> Lincoln Co.	<u>Msl. Dispatch</u> Missoula Co.	<u>Great Falls Dispatch</u> Glacier Co. - Teton Co. Toole Co. - Cascade Co. Pondera Co.		<u>Miles City Dispatch</u> Eastern L.O. - DNRC ELO Counties
<u>Plains Dispatch</u> Sanders Co. (NW Half) Sanders Co. (SE Half) * * Reports to SMICC	* Reports to Plains	<u>Dillon Dispatch</u> Madison Co. Beaverhead Co.		<u>Lewistown Dispatch</u> Northeast L.O. - DNRC NELO Counties

APPENDIX C: FLOWCHART

Montana Fire Resources Mobilization/Dispatch System

Montana Fire Resources Mobilization/Dispatch System



*Similar organization to Dillon Dispatch

DES Area and State organizations fits in as appropriate

APPENDIX D: INDEX

Drawdown Plans

INDEX - DRAWDOWN PLANS

Zone 1 - Northwest

UPDATE: 2001

**NWLO COUNTY COOP FIRE PROGRAM
MOBILIZATION CHART**

MOBILIZATION LEVEL	I	II	III	IV	V
AREA ERC CLASS	ONE & TWO	THREE MINUS	THREE PLUS	FOUR	FIVE
Coordination: Unit county Reps. and/or Area Fire Coordinators			Weekly contact with County Firewardens - i.e. fire situation & resource status.	Regular contact with County Firewardens - i.e. fire situation & resource status.	Regular contact with County Firewardens &/or Commissioners. Consider local MAC group meetings.
	- If County Assistance fire in progress, regular contact with County Firewarden &/or Commissioners.				
Fire Prevention: Unit County Reps.	Annual County fire prevention project coordination.			County Firewardens contacted about restrictions & closures.	All restrictions to include County Firewarden input.
	---- All Red Flag warnings relayed to County Firewardens ----				
Local Government Resources Mobilization: Unit County Reps. and Dispatch Centers	Interested Local Government Forces inspected and signed up on preseason rental agreements.	Availability of Local Government Forces checked weekly.	Local Forces listed with Dispatch Centers on daily availability reports.		
				All Local Forces alerted via Fire Councils and any alternates identified.	Some Local Forces may be put on standby or hired to augment DNRC crews.

FLATHEAD COUNTY FIRE SERVICES UPDATE: 2000
Wildland Fire Resource Availability List

HOME COUNTY FIRE DANGER

	LOW		MEDIUM		HIGH		VERY HIGH		EXTREME	
	<u>TYPE</u>	<u>#</u>	<u>TYPE</u>	<u>#</u>	<u>TYPE</u>	<u>#</u>	<u>TYPE</u>	<u>#</u>	<u>TYPE</u>	<u>#</u>
Within County	E1	16	E1	16	E1	16	E1	16	E1	16
	E2	9	E2	9	E2	9	E2	9	E2	9
	E3	0	E3	0	E3	0	E3	0	E3	0
	E4	0	E4	0	E4	0	E4	0	E4	0
	E5	0	E5	0	E5	0	E5	0	E5	0
	E6	0	E6	0	E6	0	E6	0	E6	0
	WT2	11	WT2	11	WT2	11	WT2	11	WT2	11
	WT3	6	WT3	6	WT3	6	WT3	6	WT3	6
Adj. County	E1	16	E1	16	E1	16	E1	8	E1	8
	E2	9	E2	9	E2	9	E2	5	E2	5
	E3	0	E3	0	E3	0	E3	0	E3	0
	E4	0	E4	0	E4	0	E4	0	E4	0
	E5	0	E5	0	E5	0	E5	0	E5	0
	E6	0	E6	0	E6	0	E6	0	E6	0
	WT2	11	WT2	11	WT2	11	WT2	5	WT2	5
	WT3	6	WT3	6	WT3	6	WT3	3	WT3	3
Within State	E1	0	E1	0	E1	0	E1	0	E1	0
	E2	0	E2	0	E2	0	E2	0	E2	0
	E3	0	E3	0	E3	0	E3	0	E3	0
	E4	0	E4	0	E4	0	E4	0	E4	0
	E5	0	E5	0	E5	0	E5	0	E5	0
	E6	0	E6	0	E6	0	E6	0	E6	0
	WT2	0	WT2	0	WT2	0	WT2	0	WT2	0
	WT3	0	WT3	0	WT3	0	WT3	0	WT3	0
Out of State	E1	0	E1	0	E1	0	E1	0	E1	0
	E2	0	E2	0	E2	0	E2	0	E2	0
	E3	0	E3	0	E3	0	E3	0	E3	0
	E4	0	E4	0	E4	0	E4	0	E4	0
	E5	0	E5	0	E5	0	E5	0	E5	0
	E6	0	E6	0	E6	0	E6	0	E6	0
	WT2	0	WT2	0	WT2	0	WT2	0	WT2	0
	WT3	0	WT3	0	WT3	0	WT3	0	WT3	0

CONTACTS: Alan Marble, County DES, 758-5561
Roger Stephens, Rural Fire Council Chairman, 755-5313
Bill Glaspey, Kalispell Unit, DNRC, 751-2273 / 250-4437
Fred Holmes, Kalispell Unit, DNRC, 751-2270 / 250-4438

2001

LAKE COUNTY FIRE SERVICES
RESOURCE AVAILABILITY LIST

2001 FIRE SEASON	LOW	MODERAT E	HIGH	VERY HIGH	EXTREME
WITHIN COUNTY	<u>TYPE #</u> E1 7 E2 5 E3 1 E4 0 E5 0 E6 9 WT2 5 WT3 3	<u>TYPE #</u> E1 7 E2 5 E3 1 E4 0 E5 0 E6 9 WT2 5 WT3 3	<u>TYPE #</u> E1 7 E2 4 E3 1 E4 0 E5 0 E6 8 WT2 4 WT3 3	<u>TYPE #</u> E1 4 E2 4 E3 0 E4 0 E5 0 E6 7 WT2 4 WT3 3	<u>TYPE #</u> E1 3 E2 4 E3 0 E4 0 E5 0 E6 6 WT2 4 WT3 3
ADJACENT COUNTY	<u>TYPE #</u> E1 7 E2 4 E3 1 E4 0 E5 0 E6 10 WT2 7 WT3 5	<u>TYPE #</u> E1 6 E2 4 E3 1 E4 1 E5 1 E6 9 WT2 6 WT3 5	<u>TYPE #</u> E1 6 E2 3 E3 0 E4 0 E5 0 E6 9 WT2 5 WT3 3	<u>TYPE #</u> E1 3 E2 2 E3 0 E4 0 E5 0 E6 7 WT2 5 WT3 2	<u>TYPE #</u> E1 3 E2 2 E3 0 E4 0 E5 0 E6 6 WT2 4 WT3 2
WITHIN STATE	<u>TYPE #</u> E1 4 E2 2 E3 0 E4 0 E5 0 E6 8 WT2 3 WT3 2	<u>TYPE #</u> E1 4 E2 2 E3 0 E4 0 E5 0 E6 8 WT2 3 WT3 2	<u>TYPE #</u> E1 0 E2 2 E3 0 E4 0 E5 0 E6 5 WT2 2 WT3 1	<u>TYPE #</u> E1 0 E2 2 E3 0 E4 0 E5 0 E6 5 WT2 1 WT3 1	<u>TYPE #</u> E1 0 E2 2 E3 0 E4 0 E5 0 E6 5 WT2 1 WT3 1
OUT OF STATE	<u>TYPE #</u> E1 0 E2 1 E3 0 E4 0 E5 0 E6 1 WT2 0 WT3 1	<u>TYPE #</u> E1 0 E2 1 E3 0 E4 0 E5 0 E6 1 WT2 0 WT3 1	<u>TYPE #</u> E1 0 E2 1 E3 0 E4 0 E5 0 E6 1 WT2 0 WT3 1	<u>TYPE #</u> E1 0 E2 1 E3 0 E4 0 E5 0 E6 1 WT2 0 WT3 1	<u>TYPE #</u> E1 0 E2 1 E3 0 E4 0 E5 0 E6 1 WT2 0 WT3 1

CONTACTS: Steve Stanley, CO. FIRE COORDINATOR 883-7253 (w), 883-5548 (h),
253-3986 (c)
LAKE CO. 911 DISP., 883-7301
David Poukish, DNRC FIRE ADVISOR, 883-3960(w)883-5190 (h) 250-3871(c)

LINCOLN COUNTY RESOURCE

DRAWDOWN PLAN UPDATE: 2001

FIRE DANGER: L(Low) M(Medium) H(High) E(Extreme)																					
		Local County				Adjacent County				Zone				State				National			
		15 Minutes				30 Minutes				4 Hours				8 Hours				24 Hours			
Department	Type	L	M	H	E	L	M	H	E	L	M	H	E	L	M	H	E	L	M	H	E
Bull Lake VRFD	ENG	0	--	--	--	--	--	--	--	--	--	--	--	--	--	--	--	--	--	→	0
	WT	0	--	--	--	--	--	--	--	--	--	--	--	--	--	--	--	--	--	→	0
Eureka FSA	ENG	3	3	3	0	1	1	1	0	1	1	1	0	1	0	--	--	--	--	→	0
	WT	3	3	3	0	1	1	1	0	1	1	1	0	1	1	1	0	--	--	→	0
Fisher River FSA	ENG	0	1	1	0	1	1	1	0	1	1	1	0	1	1	1	0	--	--	→	0
	WT	0	--	--	--	--	--	--	--	--	--	--	--	--	--	--	--	--	--	→	0
Libby VRFD	ENG	1	1	0	0	1	1	0	0	1	1	0	0	--	--	--	--	--	--	→	0
	WT	0	--	--	--	--	--	--	--	--	--	--	--	--	--	--	--	--	--	→	0
McCormick VRFD	ENG	1	1	1	0	1	1	1	0	--	--	--	--	--	--	--	--	--	--	→	0
	WT	0	--	--	--	--	--	--	--	--	--	--	--	--	--	--	--	--	--	→	0
Ranchers FSA	ENG	1	1	1	0	1	1	1	0	1	1	1	0	1	1	1	0	1	1	1	0
	WT	1	1	1	0	1	1	1	0	1	1	1	0	1	1	1	0	1	1	1	0
Trego Fortine Stryker FSA	ENG	0	--	--	--	--	--	--	--	--	--	--	--	--	--	--	--	--	--	→	0
	WT	0	--	--	--	--	--	--	--	--	--	--	--	--	--	--	--	--	--	→	0
Troy VRFD	ENG	3	1	1	1	1	1	1	1	1	1	1	1	1	1	1	1	1	1	1	1
	WT	1	1	1	1	0	--	--	--	--	--	--	--	--	--	--	--	--	--	→	0
Yaak FSA	ENG	0	--	--	--	--	--	--	--	--	--	--	--	--	--	--	--	--	--	→	0
	WT	0	--	--	--	--	--	--	--	--	--	--	--	--	--	--	--	--	--	→	0

NOTE: This draw down availability is contingent upon current local fire danger, activity, and staffing capabilities.

CONTACTS: RANDY SUTTON OFFICE of EMERGENCY MANAGEMENT 406-293-6295

**SANDERS COUNTY
RESOURCE AVAILABILITY LIST**

UPDATE: 2001

The following is a list of fire suppression equipment that is available for out-of-county dispatch, including both RFD and private contractors. Plains Dispatch will normally request county resources through the County Rural Fire Coordinator, whereas private contractors will be contacted directly.

LOW/ MODERATE/ HIGH FIRE DANGER

E-1	TYPE 1 STRUCTURAL ENGINE	2
E-2	TYPE 2 STRUCTURAL ENGINE	3
WE-3	TYPE 3 WILDLAND ENGINE	1
WE-4	TYPE 4 WILDLAND ENGINE	1
WE-5	TYPE 5 WILDLAND ENGINE	1
WE-6	TYPE 6 WILDLAND ENGINE	4
WTW-1	TYPE 1 STRUCTURAL WATER TENDER	0
WTW-2	TYPE 2 STRUCTURAL WATER TENDER	2
WTW-3	TYPE 2 STRUCTURAL WATER TENDER	2
WTT-1	TYPE 1 WATER TENDER	0
WTT-2	TYPE 2 WATER TENDER	5
WTT-3	TYPE 3 WATER TENDER	2

Resource availability under VERY HIGH and EXTREME conditions will depend on fire activity, resource commitment, and crew availability.

CONTACTS: Martha Smith, DES Coordinator/County Firewarden (w) 827-4391
Greg Archie, DNRC Plains Unit (w) 826-3851

INDEX - DRAWDOWN PLANS

Zone 2 - Southwest

UPDATE: 2001

MOBILIZATION OF LOCAL GOVERNMENT FORCES EQUIPMENT DRAWDOWN PLANS MISSOULA AND RAVALLI COUNTIES		
<u>RAVALLI COUNTY</u> - 11 Departments		
	Short Tern (for 72 hrs. or less)	Long Term (72 hrs. to 21 days)
County Dispatch 15 Min. Readiness	2 Strike Teams/Task Forces	1 Strike Team/Task Force
Zone Dispatch 4 Hour Readiness	2 Strike Teams/Task Forces	1 Strike Team/Task Force
Out-of-Zone/State 8 Hour Readiness		1 Task Force
Maximum of 2 Strike Teams of Task Forces at any one time.		

<u>MISSOULA COUNTY</u> - 7 Departments		
	Short Tern (for 72 hrs. or less)	Long Term (72 hrs. to 21 days)
County Dispatch 15 Min. Readiness	1 Strike Team/Task Force	1 Strike Team/Task Force
Zone Dispatch 4 Hour Readiness	1 Strike Team/Task Force	1 Strike Team/Task Force
Out-of-Zone/State 8 Hour Readiness	1 Strike Team/Task Force	1 Strike Team/Task Force

THE AVAILABILITY OF PERSONNEL TO STAFF APPARATUS IS THE LIMITING FACTOR FOR DISPATCHING THE ABOVE APPARATUS.

INDEX - DRAWDOWN PLANS

Zone 3 - Central

UPDATE: 2001

DRAWDOWN PLAN CLO - HELENA Numbers authorized for off-local assignment.				
		<u>AUTHORIZED BY STAFFING LEVELS</u>		
<u>RESOURCE</u>	<u>TOTAL AVAILABLE</u>	LEVELS I-II	LEVELS III-IV	LEVEL V
ENGINES	7	3	2	1
INTERFACE ENGINES	2	2	1	1
*HELITACK MODULE	2	2	1	0
OVERHEAD	12	6	4	3
KITCHEN	1	1	1	1
MOBILE CACHE	1	1	1	1
TENDERS	1	1	1	1
AIR PATROL	1	1	0	0
FIREFIGHTERS (CREW MODE)	26	10	7	3
HELICOPTER (OUTSIDE 30' CIRCLE)	1	1	NEGOTIATE	0

*HELITACK - 2 CREWS OF 5 PERSONS EACH

BEAVERHEAD COUNTY DRAWDOWN PLAN FOR COUNTY ENGINE DEPLOYMENT

UPDATE: 2001

A. Purpose of the county drawdown plan: As per request of the Montana Department of Disaster and Emergency Services (DES) for Montana counties to qualify for potential emergency disaster relief in extreme wildfire situations, the Federal Emergency Management Administration (FEMA) is requiring all counties to establish a local/interlocal mobilization drawdown plan for their available fire management resources.

NOTE: This drawdown availability is contingent upon current local fire danger and activity, and the approval of county fire management authorities. Local and adjacent county availability and duration of assignments will be as per established mutual aid agreements.

Drawdown Table Key:

SE Structure Engine
WE Wildland Engine
T/S Tender/Structure
T/W Tender/Wildland

Fire Danger: L(Low) M(Medium) H(High) E(Extreme)						
		Local Co.	Adj. Co.	Zone	State	National
Response Times and Commitment		Per Local Mutual Aid			8 Hours 2 Weeks	24 Hours 3 Weeks
<u>Department</u>	<u>Type</u>	L M H E	L M H E	L M H E	L M H E	L M H E
Dillon RVFD	SE	2	1
	WE	2	1
	T/S#	1	1
	T/W	1	1
Wise River RVFD	SE	1	0
	WE	1	0
	T/S	0	0
	T/W	0	0
Wisdom RVFD	SE	1	0
	WE	2	0
	T/S	0	0
	T/W	2	0
Jackson RVFC*	SE	1	0
	WE	1	0
	T/S	0	0
	T/W	0	0
Grant RVFC	SE	1	0
	WE	1	0
	T/S	1	0
	T/W	1	0
Lima RVFD	SE	1	0
	WE	4	0
	T/S	0	0
	T/W	1	0

* Information not current on this department.

Structure Tender that can serve as additional Wildland Tender under different NRCG rate.

BROADWATER COUNTY
DRAWDOWN PLAN
 Local Government Resources

FIRE DANGER

	LOW	MEDIUM	HIGH	EXTREME
Home County *(Immediate)	2 Type 1 2 Type 2 1 Type 4 6 Type 6 2 Tender Type 3	These Resources are Available County-wide for all Fire Conditions		
Adjacent County *(20-45 Minute)	1 Type 2 2 Type 6 1 Tender Type 3	1 Type 2 1 Type 6 1 Tender Type 3	1 Type 2 1 Type 6 1 Tender Type 3	Will Consider
Zone 3 *(2 Hours)	1 Type 2 1 Type 6 1 Tender 3	1 Type 2 1 Type 6 1 Tender Type 3	1 Type 2 1 Type 6 1 Tender Type 3	Will Consider
State *(8 Hours)	1 Type 2 1 Type 6 1 Tender 3	1 Type 2 1 Type 6 1 Tender 3	1 Type 2 1 Type 6 1 Tender 3	Will Consider
National	None	None	None	None

* Response time - Performance Standard

This is a list of equipment available on an as needed basis subject to current activities occurring within the county.

PREPARED BY: Mike Koehnke UPDATE: 2000

PHONE #s H 266-3522 W 266-5214 Cell 949-0117

CASCADE COUNTY
DRAWDOWN PLAN
 Local Government Resources

FIRE DANGER

	LOW	MEDIUM	HIGH	EXTREME
Home County *(Immediate) **(24 Hour)	15 WE Type 6 10 WT Type 2/3 5 SE Type 1/3	15 WE Type 6 10 WT Type 2/3 5 SE Type 1/3	15 WE Type 6 10 WT Type 2/3 5 SE Type 1/3	10 WT Type 2/3 5 SE Type 1/3
Adjacent County *(1 Hour) **(48 Hours)	15 WE Type 6 10 WT Type 2/3 2 SE Type 1/3	15 WE Type 6 10 WT Type 2/3 2 SE Type 1/3	15 WE Type 6 10 WT Type 2/3 2 SE Type 1/3	None
Zone *(2 Hours) **(7 Days)	4 WE Type 6 ***1 WT Type 2/3 1 SE Type 1/3	4 WE Type 6 ***1 WT Type 2/3 1 SE Type 1/3	None	None
State *(8 Hours) **(14 Days)	4 WE Type 6 ***1 WT Type 2/3 1 SE Type 1/3	4 WE Type 6 ***1 WT Type 2/3 1 SE Type 1/3	None	None
National *(16 Hours) **(21 Days)	None	None	None	None

* Response time - Performance Standard

** Commitment - Minimum Duration

*** Depends on personnel availability; also need the ability to rotate crews, as needed!

COMMENTS: Zone response times may be longer than indicated above.

PREPARED BY: Tom O'Hara UPDATE: 2000

ADDRESS:

PHONE #s 454-6834w 788-1172cell

JEFFERSON COUNTY DRAWDOWN PLAN FOR COUNTY ENGINE DEPLOYMENT

UPDATE: 2000

This county drawdown plan is compiled to comply with the request of the Montana Disaster and Emergency Services to insure that if qualification for a potential disaster relief resulting from an extreme wildfire situation the county will have in place a plan for mobilization of available fire management resources. The drawdown plan will be provided to the Helena Interagency Dispatch Center for their use in planning for and filling resource requests as needed.

NOTE: This drawdown availability is contingent upon current local fire danger and activity, and the approval of local fire department authorities. This plan may be used as a supplement to local mutual aid agreements but is not intended to replace those mutual aid agreements.

Fire Danger: L(Low) M(Medium) H(High) E(Extreme)						
		Local Co.	Adj. Co.	Zone	State	National
Response Times and Commitment		Per Local Mutual Aid Unless otherwise stated!		2 hrs./1 week	8 Hours 2 Weeks	24 Hours 3 Weeks
Department	Number	L M H E	L M H E	L M H E	L M H E	L M H E
Basin VFD	SE 1	Per Local Mutual - Aid	0.....
	WE 1		1 1 0 0	1 1 0 0	1 1 0 0
	T/S 0		0.....
	T/W 1		0.....
Boulder Town VFD	SE 2	Per Local Mutual - Aid	1 1 0 0
	WE 0		0.....
	T/S 0		0.....
	T/W 0		0.....
Boulder Valley VFD Bull Mtn. VFD	SE 0	Per Local Mutual - Aid	0.....
	WE 3		0.....
	T/S 0		0.....
	T/W 2		0.....
Clancy VFD	SE 2	Per Local Mutual - Aid	1 1 1 0
	WE 2		1 1 1 0
	T/S 0		0.....
	T/W 1		1 1 1 0
Elk Park VFD	SE 1	Per Local Mutual - Aid	Per Local Agreement	0.....
	WE 1			0.....
	T/S 0			0.....
	T/W 0			0.....
Jefferson City VFD	SE 1	Per Local Mutual - Aid	0.....
	WE 1		0.....
	T/S 0		0.....
	T/W 1		0.....
Montana City VFD	SE 2	Per Local Mutual - Aid	1 1 0 0	1 1 0 0	Consider at time of request	0.....
	WE 2		1 1 0 0	1 1 0 0		0.....
	T/S 2		1 1 0 0		0.....
	T/W 0		0.....		0.....
Whitehall VFD	SE 2	1 1 1 0	1 1 1 0
	WE 3	2 2 2 0	2 2 2 0
	T/S 1	1 1 0 0	1 1 0 0
	T/W 1	1 1 0 0	1 1 0 0
Willow Creek VFD	SE 1	0.....
	WE 4	1 0 0 0	1 0 0 0
	T/S 0	0.....
	T/W 1	0.....

LEWIS & CLARK COUNTY
DRAWDOWN PLAN

Local Government Resources

FIRE DANGER

	LOW	MEDIUM	HIGH	EXTREME
Home County *(1-24 Hour)	**Lincoln **East Valley	Same Same	Same Same	Same Same
Adjacent County *(24-48 Hours)	Lincoln East Valley	Same Same	Same Same	Same Same
Central Zone *(7-14 Days)	Lincoln	Same	Same	Same
State *(7-14 Days)	Lincoln	Same	Same	Same
Out-of-State *(21 Days)	Lincoln	Same	Same	Same

***Commitment - Minimum Duration or Range.**

****Lincoln and East Valley have committed a Type VI Engine each.**

CONTACT: Helena Interagency Dispatch Center UPDATE: 2000

PHONE # 406-449-5475

Purpose:

A matrix to provide a guideline in the drawdown and mobilization of local resources in Lewis & Clark County in the formation of single resources, strike teams or task forces for wildland fire incidents hired by DNRC per policies and procedures stated in the current NRCG Mobilization of Local Firefighting Resources guide.

Criteria:

- A. Local resources consisting of rural fire jurisdictions and personnel. This does not include private contractors, DNRC or USFS resources and personnel. **NOTE:** Contractors listed on following page!
- B. All designated resources must meet the requirements of the resource order and guidelines set forth in the Interagency Incident Management Handbook and the NRCG Mobilization of Local Firefighting Resources guide.
- C. The mobilization of designated resources will follow the standard operating procedure established under the Helena Interagency Dispatch Center Annual Operating Plan.

Based on input from the August Fire Council meeting for 1998 - Updated March 31, 1999

CENTRAL ZONE - HELENA DIVISION

PRIVATE CONTRACTORS

DRAWDOWN PLAN

FIRE DANGER

	LOW	MEDIUM	HIGH	EXTREME
Home County	Turk - Tender II Turk - Tender III Watson - Tender II Richey - Engine VI GLT - Engine VI Pearson - Suburban 4x4 Summers - Engine I Summers - Engine I	Same Same Same Same Same Same Same Same	Same Same Same Same Same Same Same Same	Same Same Same Same Same Same Same Same
Adjacent County	Turk - Tender II Turk - Tender III Watson - Tender II Richey - Engine VI GLT - Engine VI Pearson - Suburban 4x4 Summers - Engine I Summers - Engine I	Same Same Same Same Same Same Same Same	Same Same Same Same Same Same Same Same	Same Same Same Same Same Same Same Same
Central Zone	Turk - Tender II Turk - Tender III Watson - Tender II Richey - Engine VI GLT - Engine VI Pearson - Suburban 4x4 Summers - Engine I Summers - Engine I	Same Same Same Same Same Same Same Same	Same Same Same Same Same Same Same Same	Same Same Same Same Same Same Same Same
State	Turk - Tender II Turk - Tender III Watson - Tender II Richey - Engine VI GLT - Engine VI Pearson - Suburban 4x4 Summers - Engine I Summers - Engine I	Same Same Same Same Same Same Same Same	Same Same Same Same Same Same Same Same	Same Same Same Same Same Same Same Same
Out-of-State	Turk - Tender II Turk - Tender III Watson - Tender II Richey - Engine VI GLT - Engine VI Pearson - Suburban 4x4 Summers - Engine I Summers - Engine I	Same Same Same Same Same Same Same Same	Same Same Same Same Same Same Same Same	Same Same Same Same Same Same Same Same

PHONE # 406-449-5475

MADISON COUNTY DRAWDOWN PLAN FOR COUNTY ENGINE DEPLOYMENT

UPDATE: 2000

A. Purpose of the county drawdown plan: As per request of the Montana Department of Disaster and Emergency Services (DES) for Montana counties to qualify for potential emergency disaster relief in extreme wildfire situations, the Federal Emergency Management Administration (FEMA) is requiring all counties to establish a local/interlocal mobilization drawdown plan for their available fire management resources.

NOTE: This drawdown availability is contingent upon current local fire danger and activity, and the approval of county fire management authorities. Local and adjacent county availability and duration of assignments will be as per established mutual aid agreements.

Drawdown Table Key:

SE Structure Engine
WE Wildland Engine
T/S Tender/Structure
T/W Tender/Wildland

Fire Danger: L(Low) M(Medium) H(High) E(Extreme)						
		Local Co.	Adj. Co.	Zone	State	National
Response Times and Commitment		Per Local Mutual Aid			8 Hours 2 Weeks	24 Hours 3 Weeks
<u>Department</u>	<u>Type</u>	L M H E	L M H E	L M H E	L M H E	L M H E
Twin Bridges RVFD	SE	2.....>>>	0.....>>
	WE	3.....>>>	1.....>>
	T/S	0.....>>>	0.....>>
	T/W	1.....>>>	0.....>>
Harrison RVFD*	SE	1.....>>>	0.....>>
	WE	3.....>>>	0.....>>
	T/S	0.....>>>	0.....>>
	T/W	1.....>>>	0.....>>
Madison Valley RVFD	SE	3.....>>>	0.....>>
	WE	2.....>>>	0.....>>
	T/S	0.....>>>	0.....>>
	T/W	1.....>>>	0.....>>
Virginia City RVFD	SE	2.....>>>	0.....>>
	WE	1.....>>>	0.....>>
	T/S	0.....>>>	0.....>>
	T/W	1.....>>>	0.....>>
Alder RVFD	SE	1.....>>>	0.....>>
	WE	1.....>>>	0.....>>
	T/S	0.....>>>	0.....>>
	T/W	1.....>>>	0.....>>
Sheridan RVFD	SE	3.....>>>	1.....>>
	WE	3.....>>>	1.....>>
	T/S	0.....>>>	0.....>>
	T/W	0.....>>>	0.....>>

* Information not current on this department.

MEAGHER COUNTY
DRAWDOWN PLAN
Local Government Resources

FIRE DANGER

	LOW	MEDIUM	HIGH	EXTREME
Home County *(Immediate) **(24 Hour)	1 Pumper/Tender Type 2 2 Pumpers Type 1 3 Tenders Type 3 5 Wildland Pumper Type 6	Same	As Needed	None
Adjacent County *(1 Hour) **(48 Hours)	1 Pumper/Tender Type 2 1 Tenders Type 3 2 Wildland Pumper Type 6	Same	Will Consider	None
Zone *(2 Hours) **(7 Days)	1 Pumper/Tender Type 2 1 Tenders Type 3 1 Wildland Pumper Type 6	Same	Will Consider	None
State *(8 Hours) **(14 Days)	1 Pumper/Tender Type 2	Same	Will Consider	None
National *(16 Hours) **(21 Days)	None	None	None	None

*Response time - Performance Standard
 **Commitment - Minimum Duration

COMMENTS: The Pumper/Tender is a structural pumper Type 2, the Wildland Pumper is a DNRC Type 6, and the Tender is a DNRC Type 3.

PREPARED BY: Rick Seidlitz **UPDATE:** 2000

ADDRESS: P.O. Box 449 White Sulphur Springs

PHONE #s 547-3398w 547-3574h

INDEX - DRAWDOWN PLANS

Zone 4 - South Central

UPDATE: 2001

**GALLATIN COUNTY
DRAWDOWN CHART FOR ENGINE DEPLOYMENT**

Departments	In County 24 Hours	Adj. County 48 Hours	Zone 1 Week	State 2 Weeks	National 3 Weeks
Amsterdam	As Per County Mutual Aid Plan	1	0	0	0
Belgrade Rural		2	2	2	1
Bozeman		0	0	0	0
Ft. Ellis		1	1	1	0
Gallatin Gateway		1	1	1	1
Manhattan Rural		1	0	0	0
Rae		0	0	0	0
Sourdough		0	0	0	0
Three Forks		1	1	1	1
Willow Creek		0	0	0	0

What is the purpose of a County Drawdown Chart? The Bozeman Zone dispatch that we are now using as an interagency dispatch for wildland fires needs this information to help them get a better handle on how many county resources may still be available to be used before sending requests for resources to another zone or to the Northern Rockies Coordination Center (NRCC).

Does this mean we have to send an engine? No! As always, your district or area has the last call. Even if you list an engine, you may not have the personnel to be able to send it at the time of the call. This is just a close estimation based on what you think you might have available.

What does the in County through National mean and how long could our equipment and people stay out? This has to do with where you will send engines and for how long they will need to be prepared to stay. If they are sent in Park County they can expect a maximum stay of 24 hours. If it is an adjacent county, the maximum stay is 48 hours. Our Zone consists of Park and Gallatin Counties so this actually fits into the 48 hour commitment. A normal zone commitment is a week in other zones around the state. A State commitment means anywhere in the state for up to 2 weeks, and a national commitment means anywhere out of state for up to 3 weeks. Personnel can be switched out to meet a commitment.

Contact: Gallatin County Firewarden Brett Waters 406-388-4480

UPDATE: 2001

PARK COUNTY DRAWDOWN CHART FOR ENGINE DEPLOYMENT															
FIRE DANGER LEVELS E=Extreme M=Medium L=Low															
	<u>In County</u>			<u>Adj. Co.</u>			<u>Zone</u>			<u>State</u>			<u>National</u>		
<u>DEPARTMENTS</u>	E	M	L	E	M	L	E	M	L	E	M	L	E	M	L
Clyde Park City	0	0	0	0	0	0	0	0	0	0	0	0	0	0	0
Clyde Park Rural	1	2	2	1	1	1	1	1	1	0	0	0	0	0	0
Cooke City	0	1	1	0	0	1	0	0	1	0	0	0	0	0	0
Gardiner	1	1	1	0	0	1	0	0	1	0	0	0	0	0	0
Paradise Valley	2	2	2	1	1	1	1	1	1	0	0	0	0	0	0
Park Co. Rural #1	2	3	3	2	2	2	2	2	2	1	1	1	1	1	1
Livingston	1	1	1	0	0	0	0	0	0	0	0	0	0	0	0
Wilsall	2	2	2	1	1	1	1	1	1	0	0	0	0	0	0
<u>TOTALS</u>	9	12	12	5	5	7	5	5	7	1	1	1	1	1	1

What is the purpose of a County Drawdown Chart? The Bozeman Zone dispatch that we are now using as an interagency dispatch for wildland fires needs this information to help them get a better handle on how many county resources may still be available to be used before sending requests for resources to another zone or to the Northern Rockies Coordination Center (NRCC).

Does this mean we have to send an engine? No! As always, your district or area has the last call. Even if you list an engine, you may not have the personnel to be able to send it at the time of the call. This is just a close estimation based on what you think you might have available.

What does the in County through National mean and how long could our equipment and people stay out? This has to do with where you will send engines and for how long they will need to be prepared to stay. If they are sent in Park County they can expect a maximum stay of 24 hours. If it is an adjacent county, the maximum stay is 48 hours. Our Zone consists of Park and Gallatin Counties so this actually fits into the 48 hour commitment. A normal zone commitment is a week in other zones around the state. A State commitment means anywhere in the state for up to 2 weeks, and a national commitment means anywhere out of state for up to 3 weeks. Personnel can be switched out to meet a commitment.

Contact: Park County Firewarden Bob Fry 406-222-4430

INDEX - DRAWDOWN PLANS

Zone 5 - Eastern

**MOBILIZATION OF LOCAL GOVERNMENT FORCES
EQUIPMENT DRAWDOWN PLAN**

**DNRC
Northeastern Land Office**

UPDATE: 2000

RESPONSE AREA and TIMES	FIRE DANGER LOW	FIRE DANGERMEDI UM	FIRE DANGERHIGH	FIRE DANGEREXTR EME
EASTERN ZONE *(4 Hours)	1 TASK FORCE TYPE V & VI ENGINES	SAME	SAME	SAME
STATE *(8 Hours)	1 TASK FORCE TYPE V & VI ENGINES	SAME	SAME	SAME
OUT-OF- STATE	3 EACH TYPE 6	3 EACH TYPE 6	2 EACH TYPE 6	NONE

SINCE THESE RESOURCES ARE COMING FROM A NUMBER OF COUNTIES AND MAY NOT BE THE SAME ENGINES EACH TIME, THE TASK FORCE IS AVAILABLE FROM LOW UP THROUGH EXTREME FIRE DANGER.

Contact: Jerry Buhre, DNRC, Northeastern Land Office 406-538-5989

CARTER COUNTY FIRE RESOURCE DRAWDOWN PLAN

HOME COUNTY FIRE DANGER

RESPONSE AREAS AND TIMES	LOW	MEDIUM	HIGH	EXTREME
Home County *15 Minutes	5	5	5	5
Adjacent County *30 Minutes	5	5	5	5
Zone *4 Hours	4	4	4	4
State *8 Hours	4	4	3	1
National *24 Hours	3	3	2	

*Response time to the Dispatch Office

State response = possible 14 day assignment

National Assignment = possible 21 day assignment

INSTRUCTIONS: On the back side list the equipment that you are willing to dispatch. Describe the type of equipment and its general capabilities. Use your own unit numbers for the equipment.

On the table above, list the unit numbers of the apparatus you are willing to dispatch to the types of fires listed, when the conditions are as described across the top row. This is for your home county fire danger, so you will probably be willing to dispatch less equipment when conditions are extreme.

PREPARED BY: Rusty Jardee UPDATE: 2001
CONTACT PERSONS WITH PHONE #s (406) 775-8743

FAX # 775-8750

239	Mehling Vehicle	Type VI		
Bigfoot	Jesperson Vehicle	“		
42-Tango	Keith’s Vehicle	“		
Wildland I	City Vehicle	“		
318	Mehling Vehicle	Type VI		

CUSTER COUNTY FIRE RESOURCE DRAWDOWN PLAN
HOME COUNTY FIRE DANGER

RESPONSE AREAS AND TIMES	LOW	MEDIUM	HIGH	EXTREME
Home County *15 Minutes	FT-114 FT-116 FT-103 T-20 E-6	FT-114 FT-116 FT-103 T-20 E-6	FT-114 FT-116 FT-103 T-20 E-6	FT-114 FT-116 FT-103 T-20 E-6
Adjacent County *30 Minutes	FT-116 FT-103 T-20 E-6	FT-116 FT-103 T-20 E-6	FT-116 E-6 T-20	FT-116 E-6
Zone *4 Hours	FT-116 E-6 T-20	FT-116 E-6 T-20	FT-116 E-6	FT-116 E-6
State *8 Hours	FT-116 E-6 T-20	FT-116 E-6 T-20	FT-116 E-6	FT-116 E-6
National *24 Hours	FT-116 E-6	FT-116 E-6	FT-116 E-6	FT-116 E-6

*Response time to the Dispatch Office

State response = possible 14 day assignment

National Assignment = possible 21 day assignment

INSTRUCTIONS: On the back side list the equipment that you are willing to dispatch. Describe the type of equipment and its general capabilities. Use your own unit numbers for the equipment.

On the table above, list the unit numbers of the apparatus you are willing to dispatch to the types of fires listed, when the conditions are as described across the top row. This is for your home county fire danger, so you will probably be willing to dispatch less equipment when conditions are extreme.

PREPARED BY: Tod Miller UPDATE: 5/2001

CONTACT PERSONS WITH HONE #s

Brent Christopherson	232-2235(s)	232-7911(h)	853-0650 (c)
Brad Carroll	232-2235 (s)	232-6274 (h)	853-0651(c)
Tod Miller	232-2235 (s)	232-6138 (h)	951-3390 (c)
FAX	232-8666		

FT-116	Type VI Eng.	250 Ga;/	1 Ton Ford	BB-4	125 GPM
FT-117	Type VI Eng.	250 Gal.	1 Ton Dodge	BB-4	125 GPM
E-6	Type I Eng.	500 Gal.	Ford	Watrous 2 Stage	1,000 GPM
T-20	Type III Tender	1,000 Gal.	Ford	PTO Pump	250 GPM
FT-203	Type II Tender	2,500 Gal.	Dodge	PTO Pump	350 GPM

DAWSON COUNTY FIRE RESOURCE DRAWDOWN PLAN

HOME COUNTY FIRE DANGER

RESPONSE AREAS AND TIMES	LOW	MEDIUM	HIGH	EXTREME
Home County *15 Minutes	WG-9 WG-8 WG-5	WG-11 WG-9 WG-8 WG-5	WG-11 WG-9 WG-8 WG-5	WG-11 WG-9 WG-8 WG-5
Adjacent County *30 Minutes	WG-11 WG-5 WG-2	WG-12 WG-11 WG-5	WG-12 WG-11	WG-12 WG-11
Zone *4 Hours	WG-12 WG-11	WG-12 WG-11	WG-12 WG-11	WG-12 WG-11
State *8 Hours	WG-12 WG-11	WG-12 WG-11	WG-12 WG-11	WG-12 WG-11
National *24 Hours	WG-12 WG-11	WG-12 WG-11	WG-12 WG-11	WG-12 WG-11

*Response time to the Dispatch Office

State response = possible 14 day assignment

National Assignment = possible 21 day assignment

INSTRUCTIONS: On the back side list the equipment that you are willing to dispatch. Describe the type of equipment and its general capabilities. Use your own unit numbers for the equipment.

On the table above, list the unit numbers of the apparatus you are willing to dispatch to the types of fires listed, when the conditions are as described across the top row. This is for your home county fire danger, so you will probably be willing to dispatch less equipment when conditions are extreme.

PREPARED BY: WARREN BROEDER **UPDATE:** 2000 **CONTACT PERSONS WITH PHONE #s** 365-4437 (H) 365-3085 (W) 939-1093 (CELL)
FAX # 365-8888

WG-2	3750/TENDER			
WG-9	2150/TENDER			
WG-12	2150/TENDER			
WG-5	SLIP-ON			
WG-8	DNRC/SLIP-ON			
WG-11	SLIP-ON			

Robert Eggebrecht
Darran Ryan

365-4213(h) **365-5972(w)**
365-5551

PRAIRIE COUNTY FIRE RESOURCE DRAWDOWN PLAN

HOME COUNTY FIRE DANGER

RESPONSE AREAS AND TIMES	LOW	MEDIUM	HIGH	EXTREME
Home County *15 Minutes	SD-1	SD-1	SD-1	SD-1
Adjacent County *30 Minutes	SD-1	SD-1	SD-1	SD-1
Zone *4 Hours	SD-1	SD-1	SD-1	SD-1
State *8 Hours	SD-1	SD-1	SD-1	SD-1
National *24 Hours				

*Response time to the Dispatch Office

State response = possible 14 day assignment

National Assignment = possible 21 day assignment

INSTRUCTIONS: On the back side list the equipment that you are willing to dispatch. Describe the type of equipment and its general capabilities. Use your own unit numbers for the equipment.

On the table above, list the unit numbers of the apparatus you are willing to dispatch to the types of fires listed, when the conditions are as described across the top row. This is for your home county fire danger, so you will probably be willing to dispatch less equipment when conditions are extreme.

PREPARED BY: Dwight Tague UPDATE: 2001 CONTACT PERSONS WITH

PHONE #s 637-5702 H 637-5738 W

Unit					
SD-1	Type 6	4x4	200 Gal.	1 Ton Chev.	BB-4
4540	Tender Types		3,000 Gal.	Peterbilt	PTO

POWDER RIVER COUNTY FIRE RESOURCE DRAWDOWN PLAN

HOME COUNTY FIRE DANGER

RESPONSE AREAS AND TIMES	LOW	MEDIUM	HIGH	EXTREME
Home County *15 Minutes	9-8 9-9 9-10 Tender 1	Same	Same	Same
Adjacent County *30 Minutes	9-8 9-9 9-10 Tender 1	“	“	“
Zone *4 Hours	-----	-----	-----	-----
State *8 Hours	-----	-----	-----	-----
National *24 Hours	-----	-----	-----	-----

*Response time to the Dispatch Office

State response = possible 14 day assignment

National Assignment = possible 21 day assignment

INSTRUCTIONS: On the back side list the equipment that you are willing to dispatch. Describe the type of equipment and its general capabilities. Use your own unit numbers for the equipment.

On the table above, list the unit numbers of the apparatus you are willing to dispatch to the types of fires listed, when the conditions are as described across the top row. This is for your home county fire danger, so you will probably be willing to dispatch less equipment when conditions are extreme.

PREPARED BY: Ray Rolfson **UPDATE:** 2000 **CONTACT PERSONS WITH**

PHONE #s

9-8	Type II	WGC-4	200 Gal.	4x4
9-9	“ ”	WGC-4	“ ”	4x4
9-10	“ ”	BB-4	“ ”	4x4
Tender 1	Type III Wildland		1,400 Gal.	2x4

RICHLAND COUNTY FIRE RESOURCE DRAWDOWN PLAN

HOME COUNTY FIRE DANGER

RESPONSE AREAS AND TIMES	LOW	MEDIUM	HIGH	EXTREME
Home County *15 Minutes	716, 719, 715, 714, 713, 706	719, 715, 706, 716	719 715 706 716	719 715 706 716
Adjacent County *30 Minutes	715, 719, 706, 716	715, 716	715 716	715 716
Zone *4 Hours	715	715	715	715
State *8 Hours	715	715		
National *24 Hours	715	715		

*Response time to the Dispatch Office

State response = possible 14 day assignment

National Assignment = possible 21 day assignment

INSTRUCTIONS: On the back side list the equipment that you are willing to dispatch. Describe the type of equipment and its general capabilities. Use your own unit numbers for the equipment.

On the table above, list the unit numbers of the apparatus you are willing to dispatch to the types of fires listed, when the conditions are as described across the top row. This is for your home county fire danger, so you will probably be willing to dispatch less equipment when conditions are extreme.

PREPARED BY: Rob Gilbert **UPDATE:** 2001 **CONTACT PERSONS WITH**
PHONE #s 435-1122
FAX # 438-7509

	Water	Pump/GPM		
716	3,800		Type II Tender	
719	300		Type 6	
715	200		Type 6	
714	1,250	1,000	Type I Structure	
713	750	1,000	Type I Structure	
706	1,500		Type III	

ROSEBUD COUNTY FIRE RESOURCE DRAWDOWN PLAN

HOME COUNTY FIRE DANGER

RESPONSE AREAS AND TIMES	LOW	MEDIUM	HIGH	EXTREME
Home County *15 Minutes	T-1 T-2	T-1 T-2	T-1 T-2	_____
Adjacent County *30 Minutes	T-1 T-2	T-1 T-2	T-1 T-2	_____
Zone *4 Hours	T-6	T-6	T-6	T-6
State *8 Hours	T-6	T-6	T-6	T-6
National *24 Hours				

*Response time to the Dispatch Office

State response = possible 14 day assignment

National Assignment = possible 21 day assignment

INSTRUCTIONS: On the back side list the equipment that you are willing to dispatch. Describe the type of equipment and its general capabilities. Use your own unit numbers for the equipment.

On the table above, list the unit numbers of the apparatus you are willing to dispatch to the types of fires listed, when the conditions are as described across the top row. This is for your home county fire danger, so you will probably be willing to dispatch less equipment when conditions are extreme.

PREPARED BY: Lundby UPDATE: 2001 CONTACT PERSONS WITH

PHONE #s

FAX #

Ashland	T-1	WTW-2	4,000 Gal.	
Colstrip	T-2	WTW-3	1,500 Gal.	
Rosebud Cty.		Type 6	200 Gal.	

WIBAUX COUNTY FIRE RESOURCE DRAWDOWN PLAN

HOME COUNTY FIRE DANGER

RESPONSE AREAS AND TIMES	LOW	MEDIUM	HIGH	EXTREME
Home County *15 Minutes	527, 528 525, 531	527, 528 525, 531	527, 525	530, 525
Adjacent County *30 Minutes	527, 528 525, 531	527, 528 525	527, 525	525
Zone *4 Hours	530, 525	530, 525	525	525
State *8 Hours	525	525	528	528
National *24 Hours	528	528	528	528

*Response time to the Dispatch Office

State response = possible 14 day assignment

National Assignment = possible 21 day assignment

INSTRUCTIONS: On the back side list the equipment that you are willing to dispatch. Describe the type of equipment and its general capabilities. Use your own unit numbers for the equipment.

On the table above, list the unit numbers of the apparatus you are willing to dispatch to the types of fires listed, when the conditions are as described across the top row. This is for your home county fire danger, so you will probably be willing to dispatch less equipment when conditions are extreme.

PREPARED BY: Brian Nelson **UPDATE:** 2000 **CONTACT PERSONS WITH PHONE #s** 795-2605 795-2426
FAX #

525	'76 Ford Truck Tender	1200 Gal.		
527	'84 Chevy 4x4	280 Gal.		
528	DSL Jeep			
530	DSL 4x4 Pickup			
531	'74 Dodge Mini-Pumper 4x4			

As of right now, we do not have the manpower to go on national or state fires. It is my hope in the

near future that we can get two or three people to go on these fires.

APPENDIX E

Montana Mutual Aid Frequency Plan

APPENDIX E

MONTANA MUTUAL AID FREQUENCY PLAN

	LOCAL CHANNEL	COLOR NAME	FREQUENCY (MHz)	NAME
M O N T A N A M u t u a l A i d F r e q u e n c i e s		Gold	153.905	State Common Mutual Aid
		Red	154.070	State Fire Mutual Aid
		Maroon	154.280	State Fire Command and Control
		Coral	154.265	State Fire Ground #1
		Scarlet	154.295	State Fire Ground #2
		Ruby	153.830	State Fire Repeater
		Garnet	159.345	State Fire Repeater Control
		Brown	155.820	State DES
		Yellow	151.220	Fire & Aviation - DNRC
		Orange	151.400	Fire & Aviation - DNRC
	Green	171.475	U.S. Forest Service Common	