

## Prepare Now

- Provide defensible space around structures for a distance of at least 100 feet.
- Clear flammable materials from rain gutters and roof.
- Trim tree branches at least 10 feet from chimney.
- Clear at least 10 feet around propane tanks.
- For more information on legal requirements see [www.cdfslo.org](http://www.cdfslo.org)
- Replace flammable vegetation with less flammable plants. (See [www.ucfpl.ucop.edu/HOGarden.htm](http://www.ucfpl.ucop.edu/HOGarden.htm) for fire-resistant plant suggestions.)
- Use fire resistant materials for roofing and siding.
- Move wood piles away from house.
- Make sure your water tank is full and the hydrant is accessible and marked with a blue reflector.
- Have garden hose and ladder available that will reach the roof.
- Locate escape routes and *Temporary Safe Refuge Areas*. (See map inside.)
- Have an escape plan. Know where to meet your family.
- Choose an out-of-state friend or relative as a check-in contact. Write his/her name and phone number on the phone list inside.

## Evacuation Procedures

- Citizens may be notified by fire personnel and/or law enforcement personnel if evacuation is necessary.
- Safely make your way out of the area. If unable to evacuate completely, go to the closest *Temporary Safe Refuge Area* (see map).
- The Red Cross will establish evacuation centers.
- If evacuated, contact the Red Cross to provide information about your status so that family or friends can be informed.
- After an area has been evacuated, the area will remain closed until the threat has passed.
- MOST IMPORTANTLY, if you feel unsafe, don't wait. Follow the checklist items and get out.

## If You Become Trapped

### In your home:

- Stay inside until the fire passes.
- Close all windows.
- Keep all doors closed, but unlocked.
- Keep family together and remain calm.
- Remember, if it gets hot inside your house, it will be much hotter outside.

### In your car:

- Park away from vegetation.
- Roll up windows.
- Cover mouth with dry cloth to protect airway.
- Cover yourself with a blanket or jacket.
- Stay in the car until the fire passes.
- If the vehicle catches on fire, exit *only* after the wildfire has passed.

### On foot:

- Find an area away from vegetation.
- Lie face down.
- Cover mouth with dry cloth to protect airway.

## After the Fire Passes

- Check the roof and exterior of your home, extinguish all sparks and embers.
- Check your attic for hidden embers.
- Check your yard for burning wood piles, trees, fence posts or other materials.

## Returning to Your Home

- Emergency Managers will decide when it is safe to return.
- Information will be available through the media, at road blocks, shelters, *Temporary Safe Refuge Areas* and the CDF information line.

635 N. Santa Rosa  
San Luis Obispo, CA 93405



Publication funded by  
San Luis Obispo County  
Community

# Parkhill Area

## Fire Evacuation Plan



You live in  
wildfire country...  
Are you prepared to evacuate?

## CHECKLIST: What to do if a wildfire is approaching

- Park vehicles facing outward.
- Put valuables, important documents and essentials, such as medications, in your vehicle.
- Keep keys where you can find them.
- Secure pets and prepare them for transport. Horse owners may call the Horse Emergency Evacuation Team (HEET) for assistance. See phone list for number.
- Close shutters, windows, heavy drapes and fireplace dampers.
- Remove thin drapes and other flammables near windows.
- Turn on outside lights and leave some inside lights on.
- Wear long pants, long sleeved shirt, goggles or glasses, hat and a dry bandana over your face. Cotton clothing is best.
- Turn off gas at meter or propane tank.
- Tune in to Emergency Alert System  
TV: KSBY and KCOY  
Radio: 98.1 FM, 920 AM, and 1400 AM
- Safely make your way out of the area. If unable to evacuate completely, go to the closest Temporary Safe Refuge Area (see map).
- Drive with headlights on.

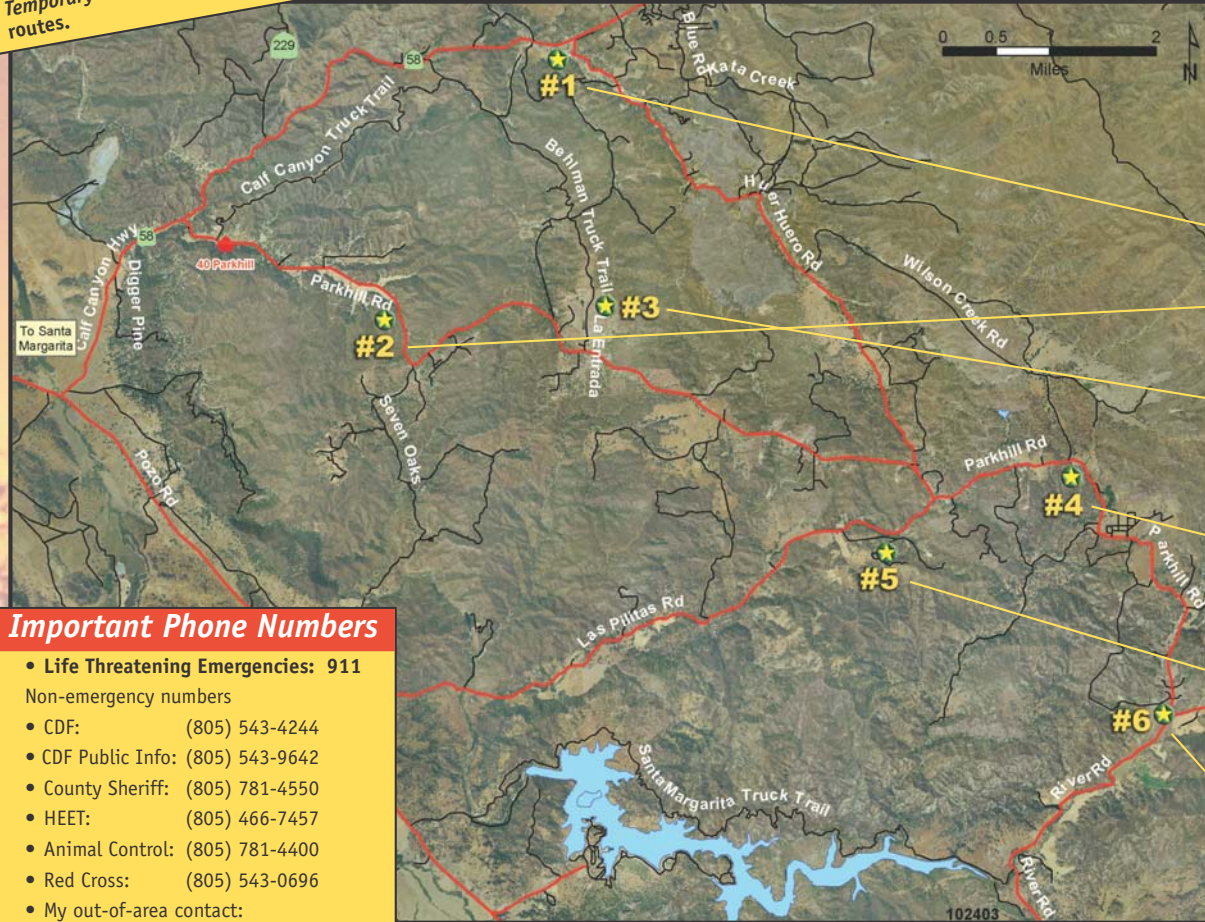
## KEEP THIS EVACUATION PLAN FOR REFERENCE

### Brought to you by:

CDF/San Luis Obispo County Fire Department  
San Luis Obispo County Sheriff's Department  
California Highway Patrol  
American Red Cross  
SLO County Community FireSafe Council

**HINT:**  
Use a highlighter and mark two possible evacuation routes from your home. Note Temporary Safe Refuge Areas along these routes.

## Parkhill Area Emergency Travel Routes & Temporary Safe Refuge Areas



### Temporary Safe Refuge Areas

A gathering point for residents if evacuation routes are obstructed by smoke, incoming emergency equipment, or directly threatened by fire

- Safe Refuge Area #1**  
Huer Huero Rd. and Highway 58
- Safe Refuge Area #2**  
Across from the Parkhill Community Church at 5745 Parkhill Rd.
- Safe Refuge Area #3**  
La Entrada, 1/4 mile North of Parkhill Rd. Accessible to residents behind the La Entrada gate entrance.
- Safe Refuge Area #4**  
Across from 2376 Parkhill Rd. 1 mile east from the intersection of Parkhill Rd. and Las Pilitas Rd.
- Safe Refuge Area #5**  
3285 Las Pilitas Rd. 1.2 miles west from the intersection of Parkhill Rd. and Las Pilitas Rd.
- Safe Refuge Area #6**  
Parkhill Rd. and River Rd.

### Important Phone Numbers

- Life Threatening Emergencies: **911**
- Non-emergency numbers
- CDF: (805) 543-4244
- CDF Public Info: (805) 543-9642
- County Sheriff: (805) 781-4550
- HEET: (805) 466-7457
- Animal Control: (805) 781-4400
- Red Cross: (805) 543-0696
- My out-of-area contact: