

Five bodies were brought into the Rishell morgue last night about eight o'clock. The bodies were horribly burned, burned so badly that identification was only made with difficulty. Bodies were prepared for burial last night and will be shipped to the various families this noon.

The tragedy area was located in Lick Island Run out of First Fork and was but one of four fires that were burning in the Sinnamahoning area that afternoon. Close to six hundred men had been pressed into service during the fire. All available forestry men were on the job including District Forester Charles E. Baer. The Cameron and Sinnamahoning camps were out in full force and men had been pressed into service from the streets of Emporium and from WPA road crews throughout the county. It was the worst series of fires in many years.

Several of the trapped boys ran through a line of fire and continued over several ridges before they were safe. All but the shoes were burned of Jacofsky who is now in the St. Marys Hospital and is expected to recover.

The nature of the fire lends belief to the thought that they may have been of incendiary origin but we could get no official verification of this theory.

willing and ambitious lads.

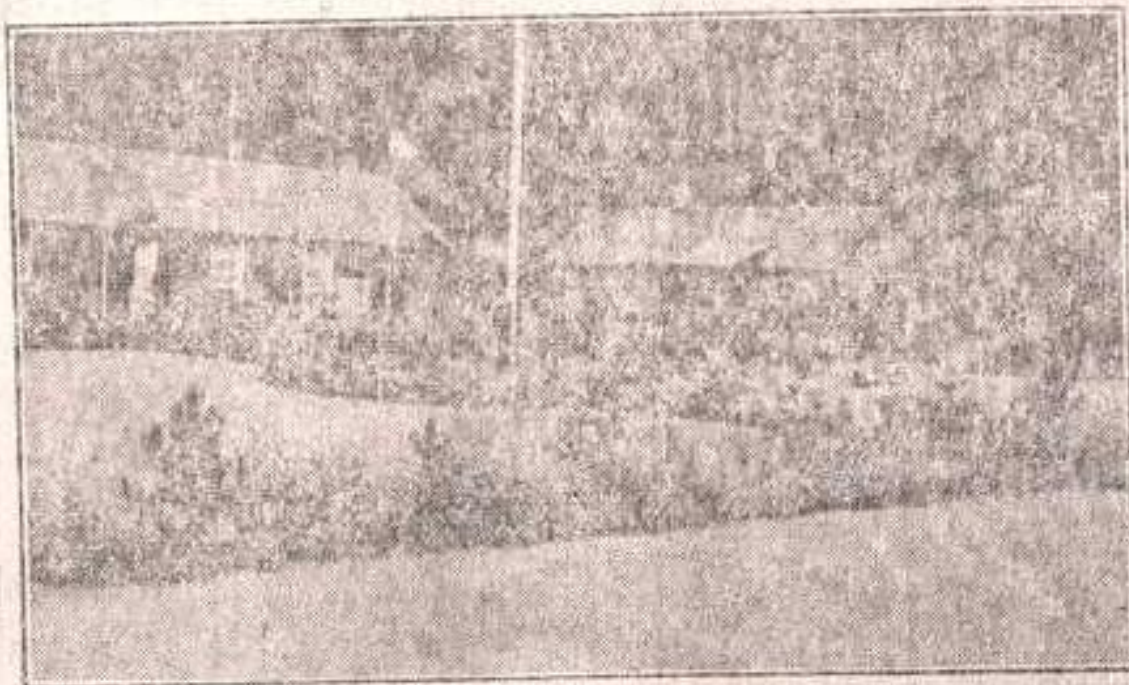
An investigation is now underway by Washington and Harrisburg officials aided by Lock Haven and Indiana Central office men. District Attorney Edwin W. Tompkins and Coroner J. D. Johnston will make their own investigation following the CCC check-up.

Ross Hailohaugh, who died this morning, is well known in Emporium and had been a steady escort of Miss Bertha George of Portage Street.

All of the other dead men, except young May, were also well known in Emporium's younger set.

TERRIFIC TOLL

Yesterday morning two large bucks were killed by a train on the track near the Blinder farm in West Creek. The same train apparently killed both of the animals as they were found within fifty feet apart. District Game Protector Ostrum states that anywhere from one to four deer are killed daily in this county either by automobile or train.



Forestry and Infirmary Buildings at Cameron Camp