



Special Issue: August 31, 2005

Type 1 and Type 2 IMT Estimated Needs – September 1 through October 31, 2005

Type 1 and Type 2 IMT needs are expected to be above average during the months of September and October. This is partly due to the fact that warmer and drier conditions are forecast over much of the west during this timeframe and also because of the abundance of cured fine fuels and fuel dryness in timbered areas below 6500 feet.

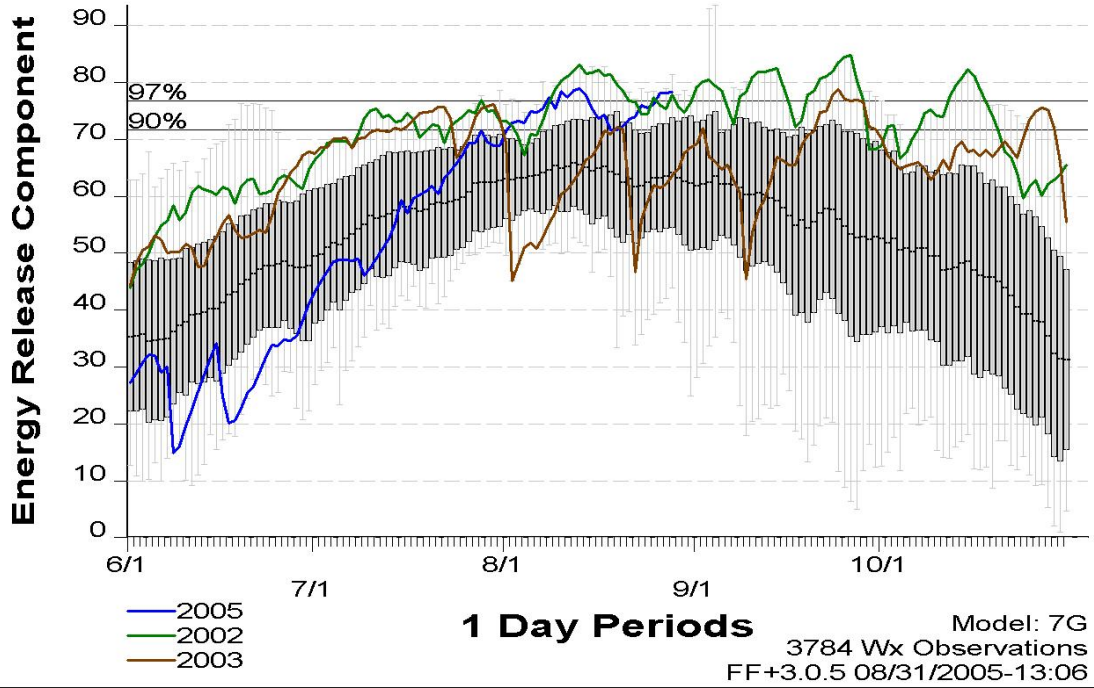
T1 AND T2 IMT ASSIGNMENTS 2000 - 2004
September & October

	T1		T2		SEPTEMBER		OCTOBER		TOTAL
	T1	T2	T1	T2	T1	T2	T1	T2	
2000	24	41	2000	18	36	6	5	65	
2001	6	42	2001	5	35	1	7	48	
2002	14	31	2002	9	20	5	11	45	
2003	26	56	2003	17	36	9	20	82	
2004	4	16	2004	2	10	2	6	20	
AVG	15	37	AVG MNTH	10.2	27.4	4.6	9.8		

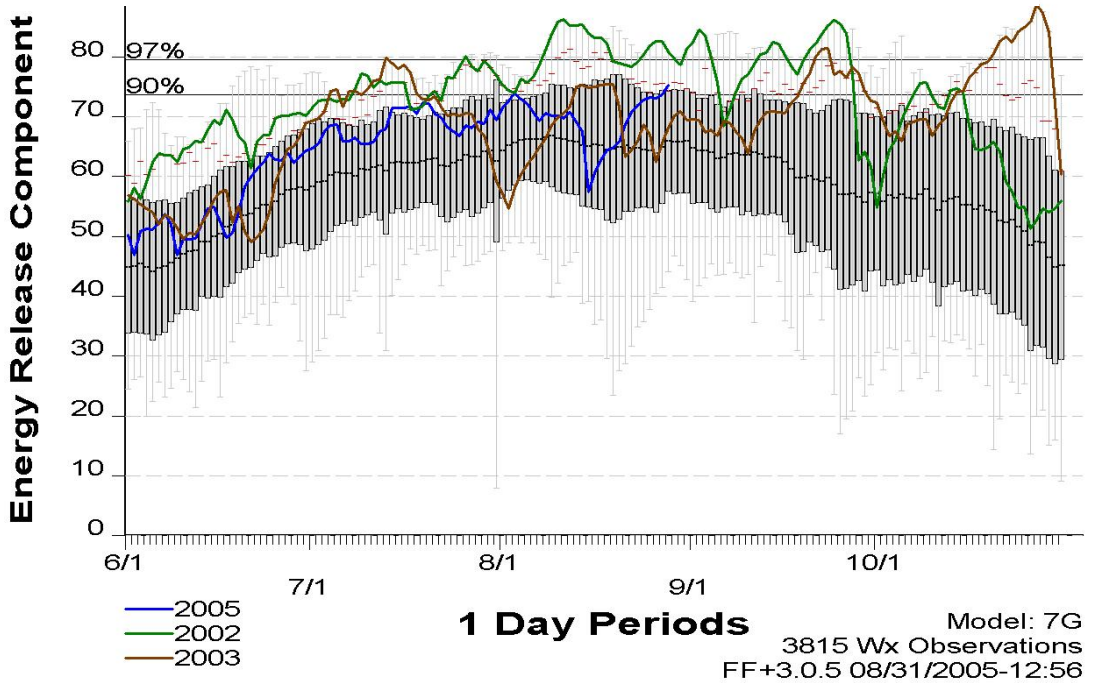
- Long-lead outlooks for September and October call for warmer than normal temperatures and below normal precipitation for much of the west. There's a good chance for an unusually early end to the summer rainy season in the Southwest, enhancing the potential for a fall fire season.
- 2002 and 2003 were fairly active years for IMT deployments. Fire danger indices are running near or above 25-year historic maximums in many mountain areas east of the Cascades in Oregon and Washington, portions of central Idaho and western Montana, portions of California, and most of Nevada.
 - o Current fire danger indices indicate fuel conditions are drier in 2005 than in either of these other benchmark years in Northern California and Central/Eastern Oregon.
 - o Indices for 2005 indicate that fuels in Southern California are currently drier than they were in 2003 when they had a very active fall fire season.
 - o Abundant, fully cured grass and brush in areas below 6500 feet will also elevate the risk of large fires during the outlook period.
- By mid-September, fire danger usually moderates in the Northwest and the Northern Rockies due to less lightning, shorter days, cooler temperatures, and higher relative humidity. However, this period is also when California typically experiences offshore wind events that are often associated with large fire growth.

The following graphs depict composite Energy Release Component values using all of the key RAWS stations in northern and southern California as well as for Oregon, east of the Cascade Crest. Note that indices did not peak until late October in southern California.

ERC_G Values for 2002, 2003, and 2005 YTD Northern California



ERC_G Values for 2002, 2003, and 2005 YTD Southern California



ERC_G Values for 2002, 2003, and 2005 YTD

Central and Eastern Oregon

