

SILVERADO FIRE PLAN

(Including Baker and Williams Canyons)



September, 2003

SILVERADO FIRE PLAN

(Including Baker and Williams Canyons)

PLAN PURPOSE:

The intent of this plan is to guide fire and law enforcement agencies during major wildfire occurrence within the Silverado Canyon area. While the plan identifies resources, actions, and critical issues for catastrophic fires, plan users are advised that they may need to moderate resource requests and evacuations for fires of lesser intensity or scale. Details of this plan will be beneficial however to any wildfire occurrence within the plan area. The following guidelines are suggested for use;

GUIDELINES FOR INITIAL ATTACK:

1. Make a good evaluation of fire growth potential.
2. Communicate via radio a good report on conditions, including correct location, size, rate of spread, structural risk, and growth potential.
3. Make an initial request to augment resources if necessary. Avoid over-ordering or “major fire ordering” initially, concentrate on acquiring immediately available/close-by resources with early augmentation requests.
4. Request law enforcement to effect immediate evacuations and road closures as necessary.
5. Consult with responding Chief Officers and agencies. Determine the limit or scope of major fire plan implementation needed.

INDICATORS FOR SIGNIFICANT OR FULL IMPLEMENTATION OF THIS PLAN:

The combination of the five following factors would suggest the need for full plan implementation. Do not delay full plan initiation when these conditions are recognized;

- A. Fire behavior and weather conditions are extreme, and significant fuel is ahead of an established fire.
- B. The fire origin is in a topographic or physical location to threaten significant structures, force significant evacuation, or lead to major fire development.
- C. Initial responders experience significant and immediate loss of ability to achieve initial containment or control of the fire.
- D. Absence of any immediate, reasonable, or safe control objectives or ability to manage the fire.
- E. Weather and fuel conditions are expected to continue to be supportive of the current fire behavior.

INCIDENT COMMANDER'S CHECK-LIST OF IMMEDIATE ACTIONS

- Establish the initial Incident Command Post at Silverado USFS /ORC Fire Station 15, 27172 Silverado Cyn. Rd., (Thomas Guide: Pg. 832 C-3).
- Unify command between the Orange County Fire Authority, U.S. Forest Service, and Orange County Sheriff. Any fire in the plan area will either be in State Responsibility Area (SRA), Federal Responsibility Area (FRA), or both.
- Determine whether Cleveland National Forest or Orange County Fire Authority will be the ordering point. (Fires from mid-canyon west will be primarily SRA/Orange County responsibility).
- Do not over-deploy fire or police units to areas without adequate safety zones.
- Deploy resources to protect Emergency Safe Refuge Areas, the Equestrian Mobilization Area, and the Silverado Elementary School as necessary. Civilians will be concentrated in these locations.
- Advise Air Operations of numerous power lines in the plan area (see maps).
- Establish staging areas for emergency resources in accordance with this plan.
- For fires with major potential, request Orange County Sheriff to initiate immediate evacuation of the entire canyon. Worst-case fires will challenge evacuation efforts.
- Notify the Silverado Elementary School/ Orange Unified School District immediately when evacuating Silverado Canyon, or when fires may threaten the school.
- Request CHP close Silverado, and/or Baker and Williams Canyons to all civilians including residents. Consider closure of Santiago Canyon between Modjeska Canyon and the Highway 241/261 interchange.
- Immediately notify the American Red Cross and Orange County Animal Control when evacuation is projected or initiated. (Early notice is essential).
- Implement a firefighting strategy that keeps fire from running canyon bottoms.
- 800 MHz radio on trunked systems and cell phone reception in canyon areas may be sporadic. Plan for alternative communications, including talk-around and VHF.
- For developing major fires, relocate Incident Command Post and Base facilities to Irvine Regional Park. (Coordinate with OC Park Rangers via OCFA dispatch).
- For fires threatening the Irvine Ranch Conservancy, seek resource protection guidance from representatives of the Nature Conservancy of Orange County/ The Nature Conservancy. (Contact Trish Smith via OCFA dispatch).

ENGINE STRIKE TEAMS NEEDED/ MAJOR FIRE-EXTREME SPREAD SCENARIOS:

Structure Protection: 13 - 21 engine strike teams (any type).

Silverado Canyon:	7 - 10 strike teams
Santiago Canyon	1 - 2 strike teams (Between Williams/Silverado)
Baker Canyon:	2 - 3 strike teams
Williams Canyon:	2 - 3 strike teams
Strategic Reserves	1 - 3 strike teams

Perimeter Control: 4 Type 3 engine strike teams (minimum)

EXPECTATION FOR ENGINE RESOURCE ARRIVAL:

For fires occurring under worst case conditions, engine needs may outpace resource availability. Resources may be particularly difficult to obtain during regional fire sieges. Past fire experience suggests that engine resource order arrival expectations could be;

First hour after request: 6 - 7 strike teams arriving plus initial attack resources

Second hour: 4 - 6 additional strike teams/ total 10-12 strike teams onscene

Third hour: 4 - 6 additional strike teams/ total 14-19 strike teams onscene

FIREFIGHTER SAFETY CONCERNS

- **Limited area exists for firefighter safety/deployment zones. This needs to be the driving factor in determining resource deployment into the canyons.**
- Expect rolling hazards such as large boulders and trees.
- Isolated areas of poor radio reception and transmission.
- Many substandard private bridges and narrow private drives, use caution!.
- Road travel is limited to a single route of access and egress, use caution when driving in smoke! Avoid deployment of fire shelters in roadways if possible.
- Overhead high voltage power lines mid-canyon and just east of Mine Tract.
- Expect spot fires to develop rapidly and at a significant distance from the main fire.
- Numerous possible entrapment areas. See map for pre-identified locations. Use good judgement, any location in the canyon holds a potential for entrapment depending upon a given set of circumstances at any particular time and place.
- Potential for extreme fire behavior such as fire whirls, area ignition, high intensity runs, and spotting along with potential for rapid structural involvement and spread.
- Potential for large stock animals to be free roaming during fire emergencies.
- Some open mine shafts, especially in the eastern end of the Canyon.

FIRE BEHAVIOR FACTORS

Major Fire History:

A significant historical fire corridor exists immediately west of the mouth of Silverado Canyon. Fires enter this corridor generally in/near Santa Ana Canyon and spread south-westerly under Santa Ana winds. Past fires in the corridor have brushed the mouth of Silverado Canyon but have generally moved away to the west. No fire has burned through the entire Silverado or Williams Canyon watershed in modern times. The western side of Baker Canyon was burned in 1997. Past major fires in the Silverado region have included;

Green River Fire: 11/4/48, wind driven, 47,000 acres, burned the west end of Silverado
 Paseo Grande Fire: 10/29/67, wind driven, 49,000 acres, 66 homes in Lemon Heights
 Grundy Fire: 12/8/75, wind driven, 1,170 acres, started from structure fire in Cabin Land Tract of Silverado, 4 homes lost.
 Gypsum Fire: 10/9/82, wind driven, 16,800 acres, 14 homes lost in Orange
 Silverado Fire: 9/10/87, 7,700 acres, fuel-plume dominated, only modern fire to burn east, started near Mine Tract, could not burn north aspects.
 Baker Fire: 10/13/97, wind driven, 5,800 acres
 Santiago Fire: 8/31/98, thunderstorm/fuel-plume dominated, 7,759 acres.

Fuels:

- South facing slopes: medium coastal sage scrub with a high percentage in decadent, old age class condition. Moderate to good continuity. Fuel Model 4-6 (B).
- North facing slopes: medium to very heavy, continuous and decadent coastal sage scrub and hard chaparral. Fuel Model 6 (B). Almost no fire history in this aspect.
- Some timber (Douglas Fir) in isolated stands south of the Mine Tract area. This timber is intermixed in some areas with chaparral. Fuel Model 10.

Canyon Topography:

- Silverado and Williams Canyons lie almost true east/west. Baker Canyon runs northeast-southwest. Slopes are 40-60%. Steep north aspects in Silverado receive little direct solar heating except during the longest days. The canyons are highly fragmented with elevations rising from 1,000 at Fire Station 15 to 4,000 feet along the North Main Divide.

Fire Weather Factors Supportive of Large Fire Development:

- Threshold for “watch-out” fire behavior: Winds in excess of 12 MPH, relative humidity less than 48%, temperature over 90 degrees, Burning Index over 81. These conditions are met or exceeded in the area approximately 10% of the days/year on a 10 year average, usually in the fall months. (NFDR Area 640)
- Red Flag Warning Criteria: Santa Ana winds in excess of 20MPH, relative humidity less than 15%, Burning Index over 81.

Potential Fire Behavior: (See FIRE BEHAVIOR CONTINGENCY map)

- Potential for fuel/plume dominated fire behavior when wind, fuel and slope are in alignment, or when large numbers of structures are also involved.
- The attached fire behavior contingency map was developed using the BEHAVE model for a worst-case scenario involving Santa Ana wind driven wildfire. Other weather and fire behavior conditions may develop other trajectories.
- Flame lengths of 60 feet can be expected from south facing slopes and over 100 feet from north facing slopes.
- Expect significant slope domination in spread, except during high winds.
- Expect long range spotting along the slope and especially in the canyon bottoms in and around structures. Spot fires will need to be picked up aggressively in

residential areas to avoid wide spread loss of property and to limit the energy release associated with large tracts of structures burning.

- Expect extreme fire behavior and long range spotting if heavily fueled north facing slopes burn actively.

STRATEGY AND TACTICS

Strategic Priorities:

- Fire fighter safety. Watch for extreme fire behavior, downed or overhead power lines, rolling boulders, limited Safety Zones and a poor escape route. Avoid deployment where firefighter safety is unrealistic.
- Evacuate all civilians from the canyons to either evacuation shelters or, if not possible, to pre-identified Emergency Safe Refuge Areas within the canyon.
- Structure protection. (see map for Special Hazard Zones)
- Keep fire from running the bottom of the drainage. Fire spreading in this manner will provide the greatest human and structural risk. Considering firing or other alternatives to drive fire higher on the canyon walls. Watch out for spotting into the canyon bottoms.

Structure Protection/ Life Safety Demands: (approx.)

- Silverado Canyon: 735 residential structures; population of 2,800
- Baker Canyon: 45 residential structures; population of 90
- Williams Canyon: 23 residential structures; population of 80
- Santiago Canyon, between Williams and Silverado Canyons: 10 residential & commercial structures, 1 elementary school (pop. 140), residential population: 21

Structure Protection Considerations:

- Limit structure protection hoselays to 300' for safety, back apparatus in, do not block egress of others, keep 50-100 gallons of tank water for safety. Stay Mobile!
- Type 1 engines must exercise caution and judgement so as not to be trapped when driving on side streets off Silverado Canyon Rd.
- The majority of canyon structural exteriors have been constructed with combustible materials with non-fire resistive features.
- In many locations, residences have been constructed with little or no setbacks from property line or other structures. Most structures are within 25' to 50' of vegetation.
- There are 5 distinct residential tracts in Silverado Canyon, which are isolated from tract to tract by large brush covered areas
- Outbuildings and storage adjacent to homes of combustible materials such as old lumber, paper and cardboard products and other discarded materials are prevalent throughout the canyon.
- If necessary to stop in street, park in east-bound lanes only to maintain traffic flow.

Resource Deployment:

Engine deployment and positioning is recommended on the attached maps. Maximum listed deployments are predicated on the maximum available safety/deployment zones available. Engines are expected to be mobile and cascade from one threat to another,

leaving behind a residual firefighting force for maintenance of structure protection. Deployment in excess of the recommendation may not have sufficient safety zone capacity in case of burn-over entrapment. The total engine resource needed for structure protection is 13- 21 strike teams. Four additional Type 3 engine strike teams (min.), plus dozers, crews, aircraft, etc. will be needed for perimeter control.

WATER SUPPLY

Be cautious if using a single head/wharf hydrant. Water pressure is not assured!!!

If power is lost, supply pump failure will occur. A representative of the Santiago Water District should be contacted to set up stand-alone generators in this eventuality for each of the district’s seven reservoirs at four sites. The water district will need fire apparatus assistance to maintain pumping after 6-8 hours of no power. Total reservoir capacity is 1.1 million gallons in Silverado, and 600,000 gallons in Williams Canyon. Fire flows average 600-700 GPM at the top of Silverado Canyon to 2000 GPM near Fire Station 15. Williams Canyon can meet 2500 GPM fire flow throughout, but has only 80,000 gallons of tank capacity near the top. Baker Canyon relies on local wells and pumps. The Santiago County Water District phone is (714)649-2630.

INCIDENT FACILITIES

Plan Area Thomas Bros Maps:

Orange County Thomas Bros. Map

Vicinity: page 802

Detail: Pages 832, 802

Helispots/Water Points:

<u>Location</u>	<u>Elevation</u>	<u>GPS</u>	<u>Thomas Bros.</u>
-----------------	------------------	------------	---------------------

Water Point:

Irvine Lake	787’	N 33*46.578’ W117*43.088’	Pg. 801 E-6
Peters Canyon Reservoir	548’	N 33*46.90’ W117* 45.79’	Pg. 800 J-5

Helispot:

- Loma EOC 15-A 1300’ N 33* 46.0’ W 117* 44.7’ Pg. 801 B-7
- Irvine Park 23-A 600’ N 33* 48.2’ W 117* 45.3’ Pg. 800 J-3
- Black Star (limited use) 1072’ N 33* 45.252’ W117* 40.289’ Pg. 832 A-1

Staging Areas:

<u>Location</u>	<u>Address</u>	<u>Thomas Bros.</u>	<u>Capacity</u>
• Calvary Chapel of the Canyons	8002 Silverado Cyn. Rd.	Pg. 832 C-3	4 ST’s
• Silverado Elementary School	7531 Santiago Cyn. Rd.	Pg. 832 B-3	3 ST’s
• Jackson Ranch Development	Jackson Ranch Rd.	Pg. 832 D-5	4 ST’s
• Irvine Lake	4621 Santiago Cyn. Rd.	Pg. 801 E-6	6 ST’s
• Irvine Regional Park	1 Irvine Park Rd. Orange	Pg. 800 J-3	40 ST’s

Command Post and Incident Base Locations:

Initial Command Post:

Orange County FS15/USFS Sta. 27, 27172 Silverado Canyon Rd.

Phone: Station 15 (714)649-0190 USFS Sta. 27 (714)649-2645

Major Incident Base/ Command Post:

Irvine Regional Park, #1 Irvine Park Rd., City of Orange Thomas Guide: Pg. 800 J-3

Phone: (714)973-6834 (or 6836/37/38)

PHONE NUMBERS (Not for Civilian Distribution)

• TO REPORT AN EMERGENCY: DIAL 911

- OC Fire Authority Dispatch: (714)744-0457 or (714)744-0456
- OC Fire Authority Dispatch Command Line: (714)744-0409
- OC Fire Authority Battalion 3 Chief: Office (714)544-7788, Cell (714)745-1431
- OC Fire Authority Division 4 Chief: Office (714)730-6107, Cell(714)319-4332
- OC Fire Authority Fire Command 2 Cell: (714)742-0169
- OC Fire Authority Fire Station 15, 27172 Silverado Canyon Rd, Thom. Bros. 832 C-3: (714)649-0190

- U.S. Forest Service, Cleveland National Forest dispatch: (619)557-5262
- U.S. Forest Service, Silverado Fire Station # 27: (714)649-2645
- U.S. Forest Service, Trabuco District, Cleveland National Forest (909)736-1811

- OC Sheriff's Dispatch: (714)288-6744
- California Highway Patrol: (949)223-5463 or request through OCFA-ECC

- American Red Cross to set up the evacuation center: (714)481-5300 or request through OCFA-ECC
- Carbondale Ranch (Equestrian Staging Area), 27271 Silverado Canyon Rd., (714)649-3171
- OC Animal Control to assist with stock and domestic animals: (714)935-7158 or request through OCFA-ECC
- Silverado Elementary School-Orange Unified School District: (714)997-6000

- OC Parks Dept./Irvine Regional Park (714)973-6834 (or 6836/37/38)
- Santiago County Water District: (714)649-2630
- Nature Reserve of Orange County: Contact: Trish Smith, OCFA pager 3318

SPECIAL HAZARD ZONES

These zones are locations where firefighting operations may be compromised because of the presence of significant safety concerns. The areas are shaded on plan maps and have a corresponding number to the detail, below. **Most structures in Special Hazard Zones are located in areas that can potentially generate extreme BTU outputs in short periods of time over a wide area. Expect life-threatening fire conditions if substantial fire fronts or well-developed spot fires occur in these areas.**

Silverado Canyon:

1. **Cabin Land:** very narrow roads, limited access, no safety zones, insufficient turn-arounds and tight compactness between structures.
2. **Ladd Canyon:** bridges unable to carry the load of fire apparatus
3. **Mustang Springs/E. Ladd Cyn:** narrow dirt road, insufficient turn-arounds and no safety zones
4. **Sycamore Drive:** very narrow road, no turn-arounds, tight compactness between structures, low over-head canopy and low over-head power lines.
5. **Rancho Way:** narrow road, insufficient turn-around and low over-head canopy
6. **Olive Drive:** very narrow road, low over-head canopy and minimum vegetation clearance around structures and road way.
7. **Shady Brook Dr./Sleepy Hallow:** narrow road, insufficient turn-arounds and limited vegetation clearance around structures.
8. **Hazel Bell Dr./Wildcat Cyn.:** very narrow road, insufficient turn-around on Hazel Bell, limited water supply, limited clearance vegetation around structures and tight compactness between structures. Wildcat has a good turnaround 1/8 mi. up (at end).
9. **Hillside Lane:** narrow road, no turn-around and limited vegetation clearance around structures and roadway.
10. **Brookside Terrace:** narrow road and insufficient turn-around.
11. **Oak Lane:** very narrow road, low over-head canopy and minimum vegetation clearance around structures and road way.
12. **Big Oak Canyon:** steep narrow road, limited turn-arounds, limited vegetation clearance around structures and no vegetation clearance along road way.
13. **Belha:** narrowing road way with no turn-around and low overhead canopy.
14. **Hafra:** not passable to fire apparatus.
15. **Mountain View Trail/Mine Tract north:** very narrow road, no turn-around, low over-head canopy and limited vegetation clearance around structures and roadway.
16. **Half Way Rd./Schmit Rd./Mine Tract south:** narrow road, tight compactness between structures.

Williams Canyon:

17. **Arcadia Av:** narrow dirt road, limited water supply and low over-head canopy.
18. **Rancho Sonado:** no vegetation clearance on roadway, limited clearance around structures.

Baker Canyon:

No special hazard zones listed.

EMERGENCY EVACUATION

The Orange County Sheriff will order and direct civilian evacuation during fires.

Public Evacuation Assembly Points:

Public safety officials will direct evacuees to one of two sites based on safety from fire spread. Red Cross and others will meet evacuees at these sites to provide support and information, and redirect to long-term shelters if required. These sites are;

South Evacuation: Saddleback Church, 1 Saddleback Parkway, Lake Forest
Near corner of El Toro Rd. and Marguerite Parkway
Office: (949)609-8000, 24 hour: (949)400-8416,
Contact: Lance Collins, LanceC@Saddleback.net

North Evacuation: DBA as: Orange Park Acres Equestrian Facility/ Hiramatsu Farms.
Owner: Hanson Aggregate Co., 6146 Santiago Blvd., Orange
Contact: Ken Barker (909)945-5896, fax: (909)945-5897, Ken.Barker@hansonamerica.com

Public safety officials must notify the American Red Cross and Orange County Animal Control immediately when an evacuation is projected or initiated.

Silverado Elementary School:

The Silverado School (Orange Unified School District) is prepared to evacuate students and staff by bus immediately. There are approximately 140 persons at the school site during business hours. The evacuation should be complete within 20-30 minutes of notification. Students will be evacuated to either El Modena High School or El Toro High School based on the location of the fire threat and bus transport facility utilized. Firefighting resources should be deployed to assist/protect the evacuation. Contact : Pat Evans, School Principal, (714)997-6000.

Silverado Equestrian/Livestock Staging:

A stable in Silverado Canyon has been designated for temporary placement of large animals awaiting mobilization to animal evacuation shelters. The facility will likely require protection by firefighting resources if threatened, and may not be independently fire-safe. Civilians are likely to be concentrated here. Animals staged here will be relocated by Orange County Animal Control if necessary. Approximately 200 large animals are located within the Silverado Canyon Area. The facility is;

Carbondale Ranch stables, 27271 Silverado Canyon Road, Silverado
Contact: Dana Judd (714)649-3171,

Evacuation Issues:

- Evacuate civilians out of the canyon via Santiago Canyon Road only, do not use dirt truck trails! (fire entrapment concern).
- The Orange County Sheriff-Coroner has jurisdiction for evacuation, CHP has jurisdiction for traffic control.

- Drive with caution around fire apparatus and firefighters, especially in smoky conditions.
- If evacuation of residents from the canyons is not possible due to fire conditions, direct residents to the nearest Emergency Safe Refuge Area until evacuation can be accomplished.

Emergency Safe Refuge Areas: (See attached maps)

These locations are suitable for emergency relocation in case of sudden fire entrapment. Firefighters may need to use fire shelters or other protection measures when subjected to burn-over in these areas. Civilians unable to evacuate the canyon may seek refuge here but may be subject to injury during burn-overs. Fire resources should be deployed to protect civilians trapped in these areas. They include;

<u>Location</u>	<u>Max. # of engines</u>	<u>Thomas Guide</u>
Silverado Canyon Road at Thisa Way.	10	Pg. 832 E-2
Fire Station 14: 29402 Silverado Cyn. Rd.	5	Pg. 832 G-2
Calvary Chapel of the Canyons: 8002 Silverado Cyn. Rd.	20	Pg. 832 C-3
Silverado Elementary School: 7531 Santiago Cyn. Rd.	15	Pg. 832 B-3
Black Star R.V. and Pic Nic Park 27912 Baker Cyn. Rd.	15	Pg. 832 B-1

AGENCIES AND ORGANIZATIONS ASSISTING IN PLAN DEVELOPMENT

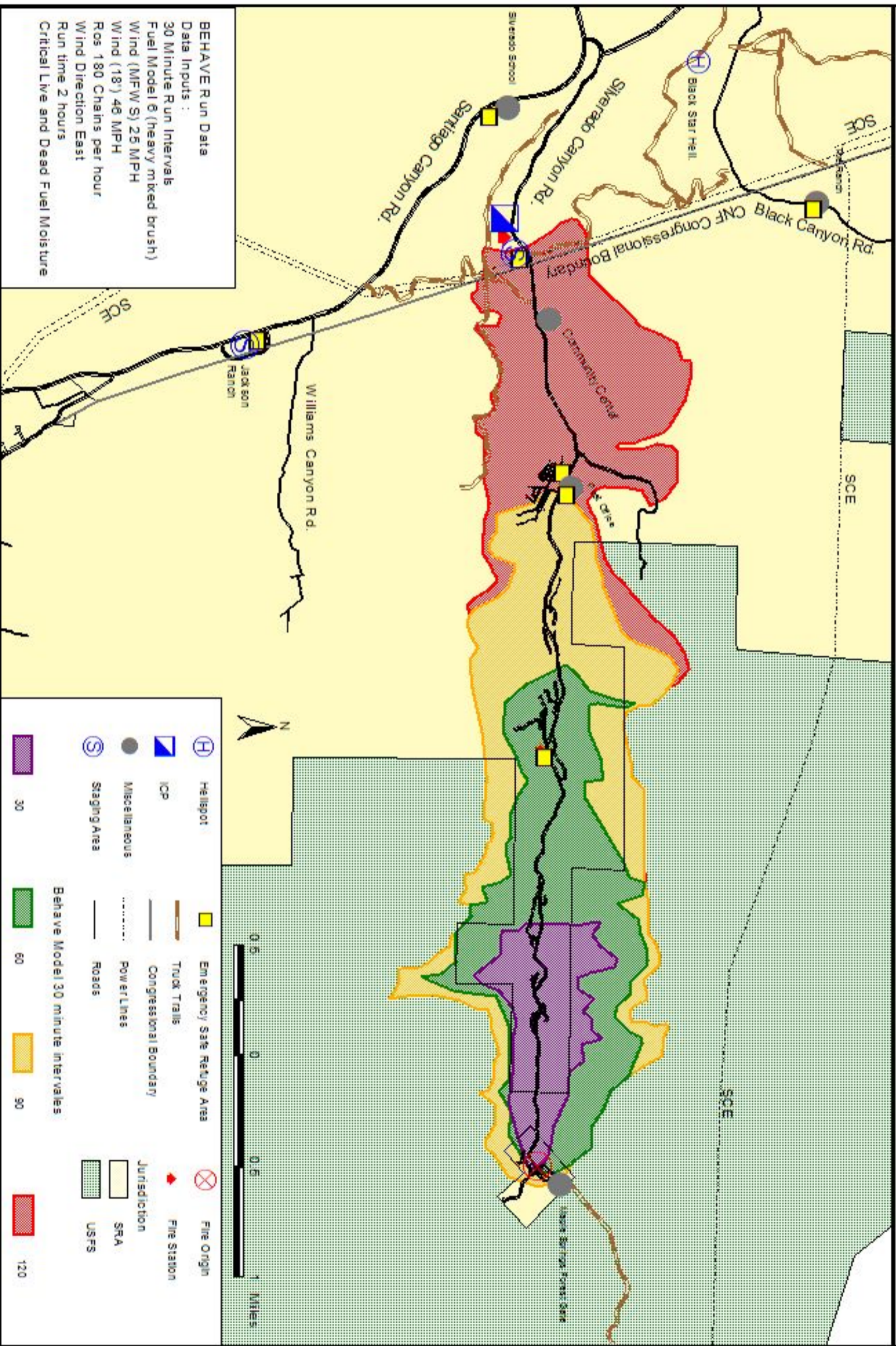
- Orange County Fire Authority
- Orange County Sheriff-Coroner Department
- U.S.D.A. Forest Service, Cleveland National Forest
- Silverado Fire-Safe Council
- Inter-Canyon League
- California Highway Patrol
- American Red Cross
- Orange County Animal Control Department
- Orange Unified School District
- Santiago Water District
- California State University, Long Beach, Geography Department
- Saddleback Church, Lake Forest CA.
- Hanson America Inc., DBA Sully Miller Land Company

Plan Development Staff

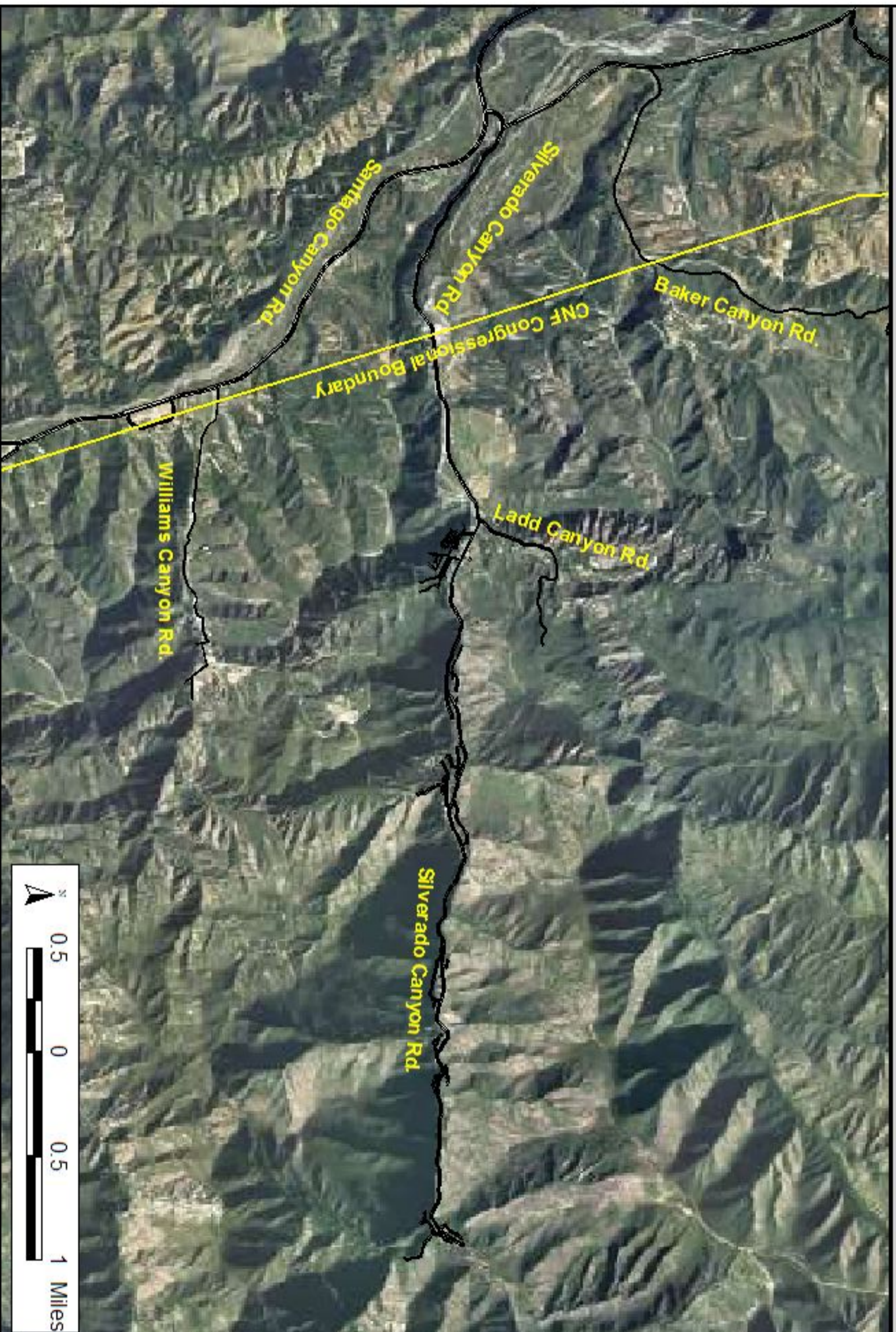
Larry Black, Fire Captain, George Ewan, Wildand Fire Defense Coordinator, Dave Bautista, Fire Captain/Fire Behavior Analyst, Mike Rohde, Battalion Chief; Orange County Fire Authority. Dan Hofer, GIS Specialist/Graduate Student; California State University, Long Beach. Mark Levy, Sergeant; Orange County Sheriff-Coroner Department. Gordon Martin, Battalion Chief, Matt McClements, Captain; USDA Forest Service, Cleveland National Forest.

Plan Date: September, 2003

FIRE SPREAD PREDICTION SILVERADO CONTINGENCY

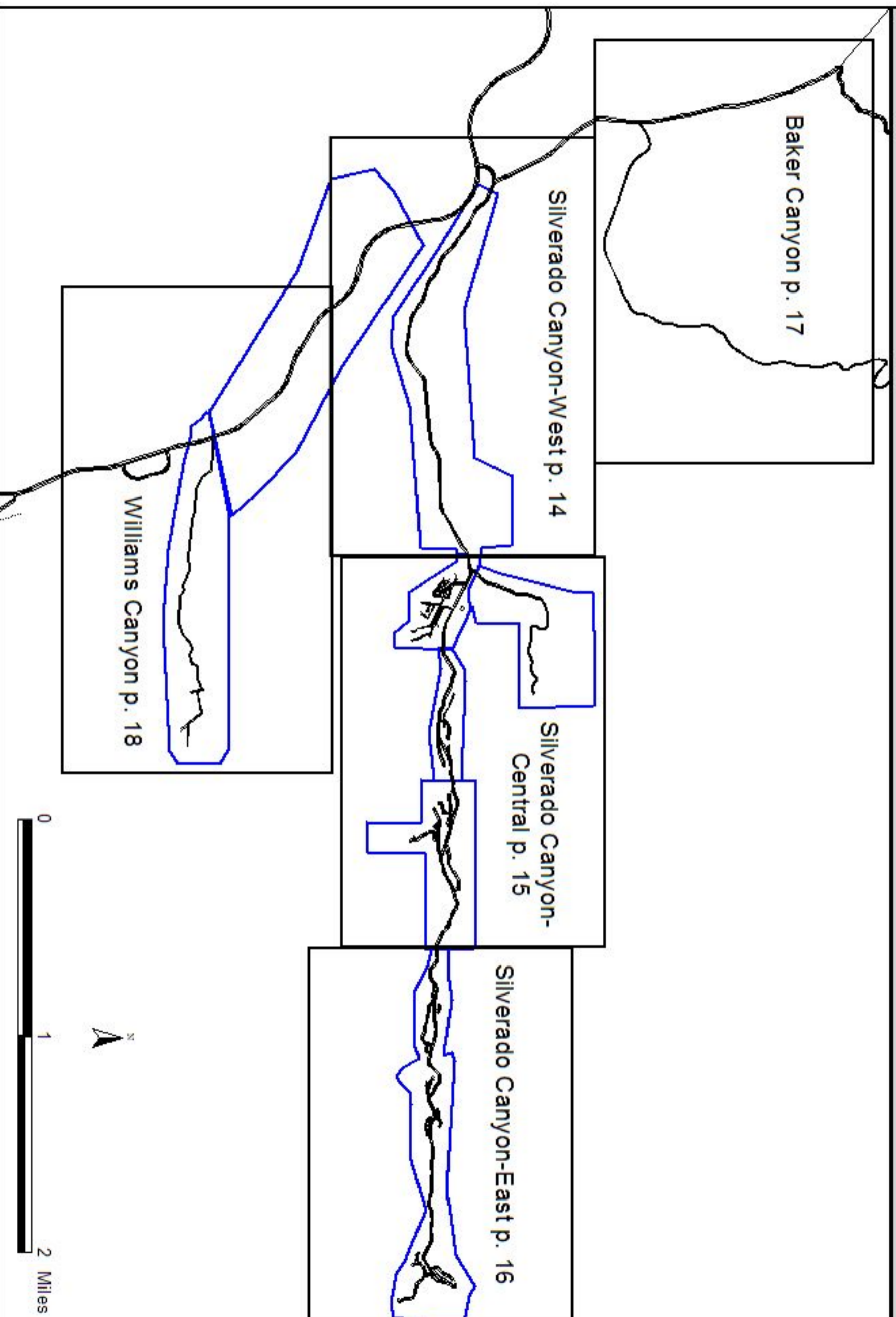


Aerial Photo



Key Map

to Detail Pages



Baker Canyon p. 17

Silverado Canyon-West p. 14

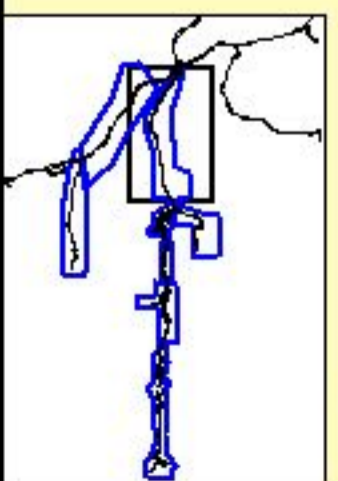
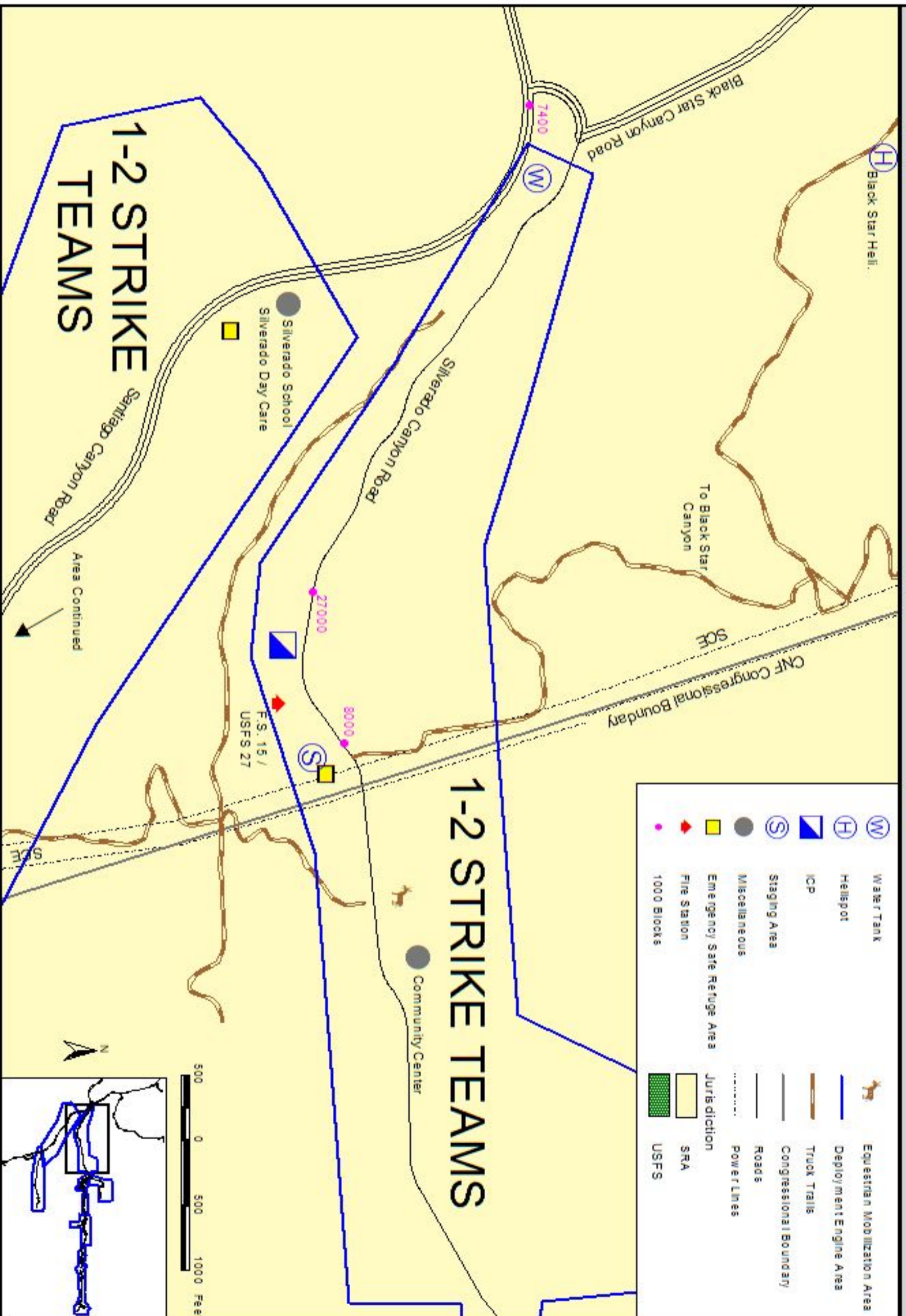
Silverado Canyon-Central p. 15

Silverado Canyon-East p. 16

Williams Canyon p. 18



Silverado Canyon-West



Areas Continued

1-2 STRIKE TEAMS

1-2 STRIKE TEAMS

Silverado School
Silverado Day Care

Community Center

Black Star Canyon Road

Silverado Canyon Road

Santiago Canyon Road

To Black Star Canyon

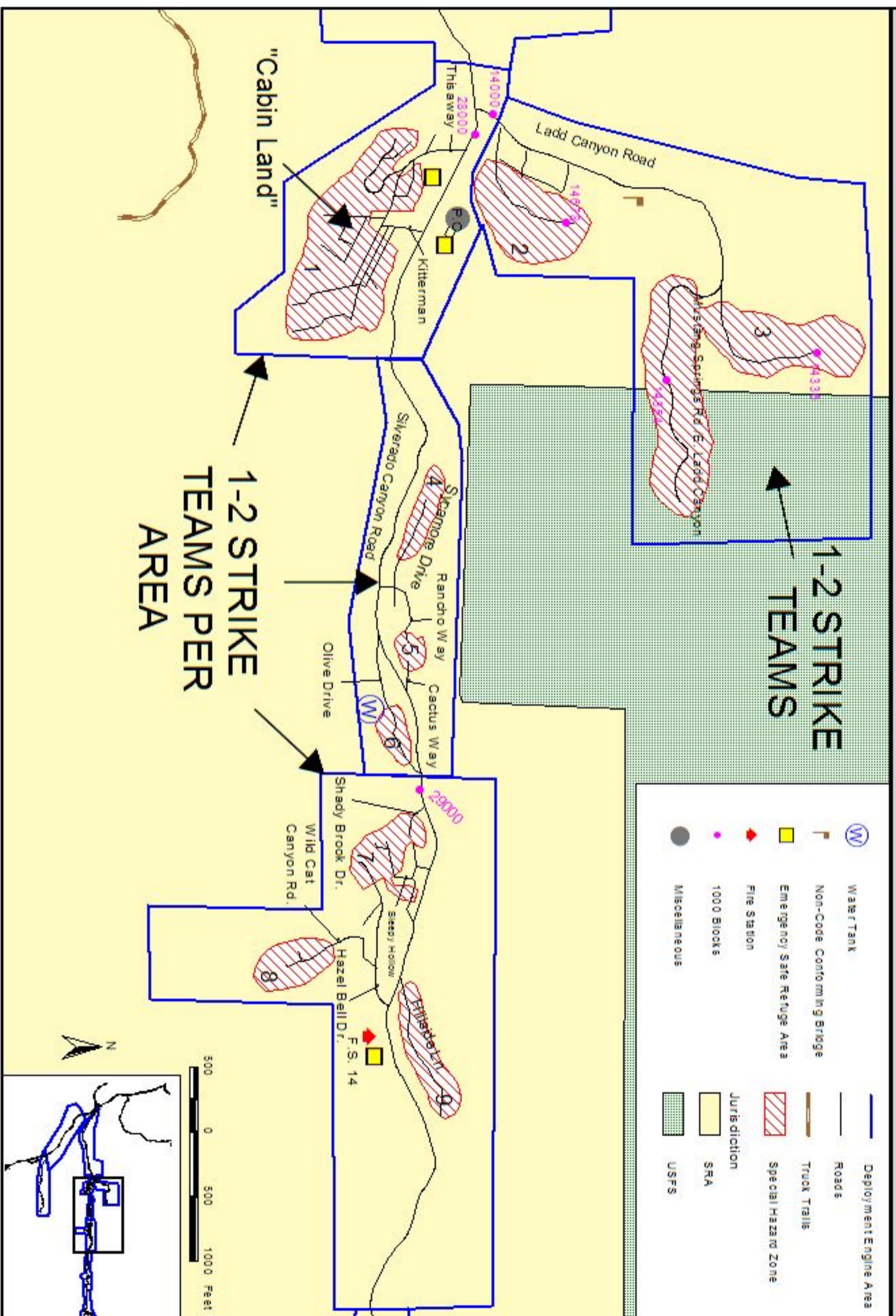
CNF Congressional Boundary

SCE

F.S. 16 /
USFS 27

- (W) Water Tank
- (H) Helipad
- (S) ICP
- (S) Staging Area
- Miscellaneous
- Emergency Safe Refuge Area
- ▲ Fire Station
- 1000 Blocks
- 🐎 Equestrian Mobilization Area
- Deployment Engine Area
- Truck Trails
- Congressional Boundary
- Roads
- Power Lines
- Jurisdiction
- SRA
- USFS

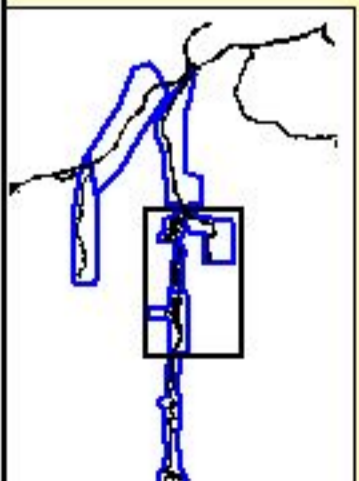
Silverado Canyon-Central



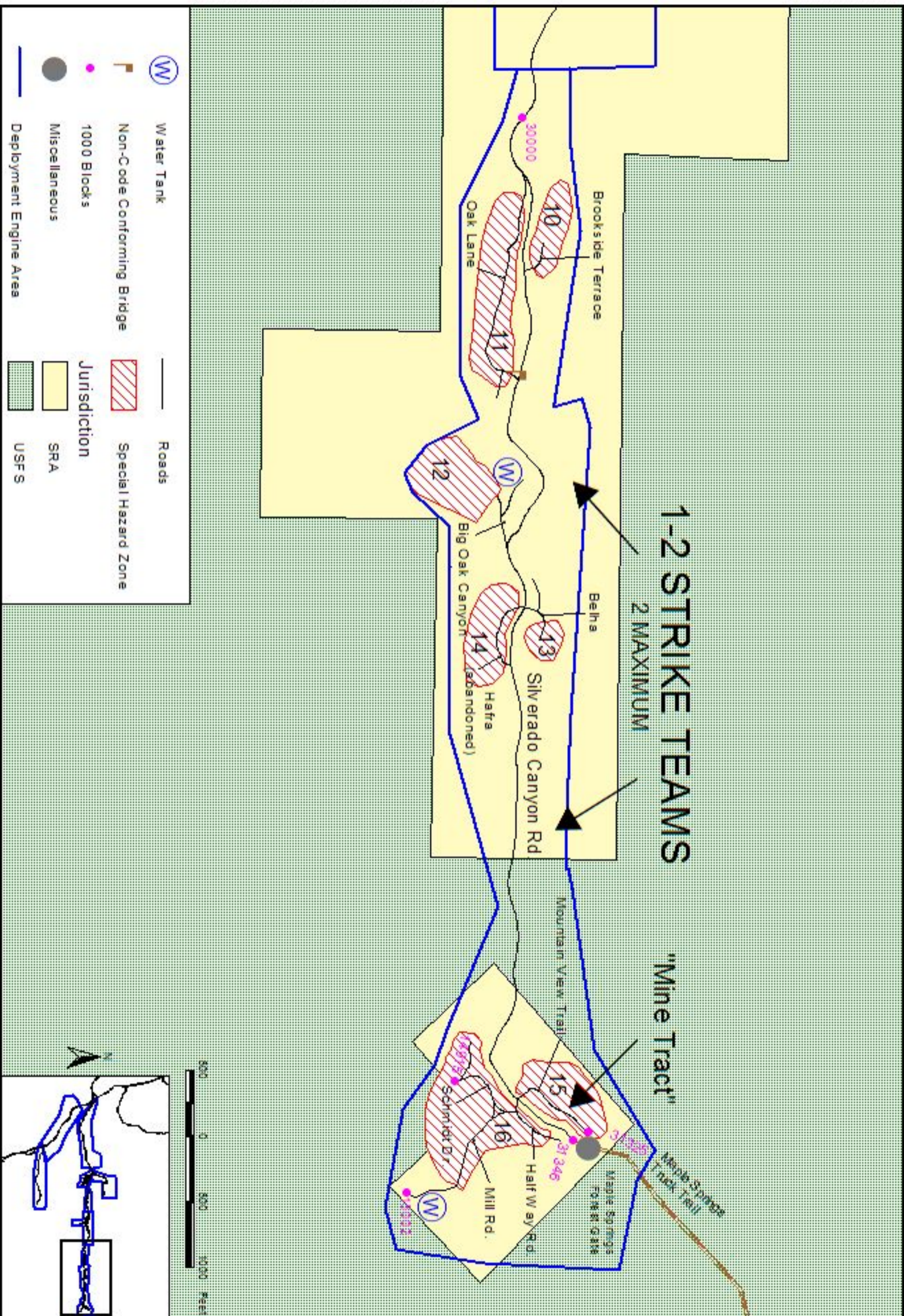
1-2 STRIKE
TEAMS

1-2 STRIKE
TEAMS PER
AREA

- Water Tank
- Non-Code Conforming Bridge
- Emergency Safe Refuge Area
- Fire Station
- 1000 Blocks
- Miscellaneous
- Deployment Engine Area
- Roads
- Truck Trails
- Special Hazard Zone
- Jurisdiction
- SRA
- USFS

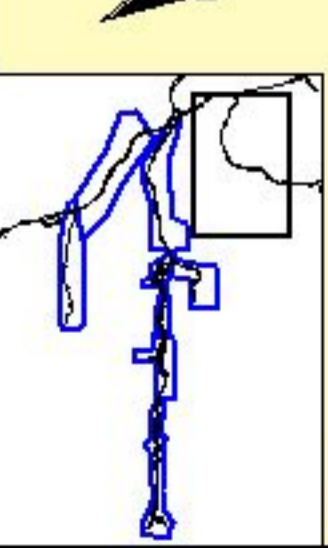
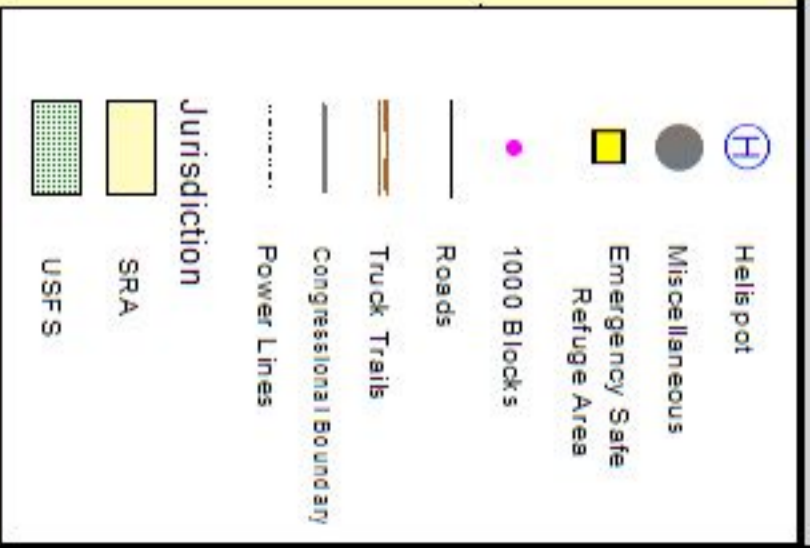
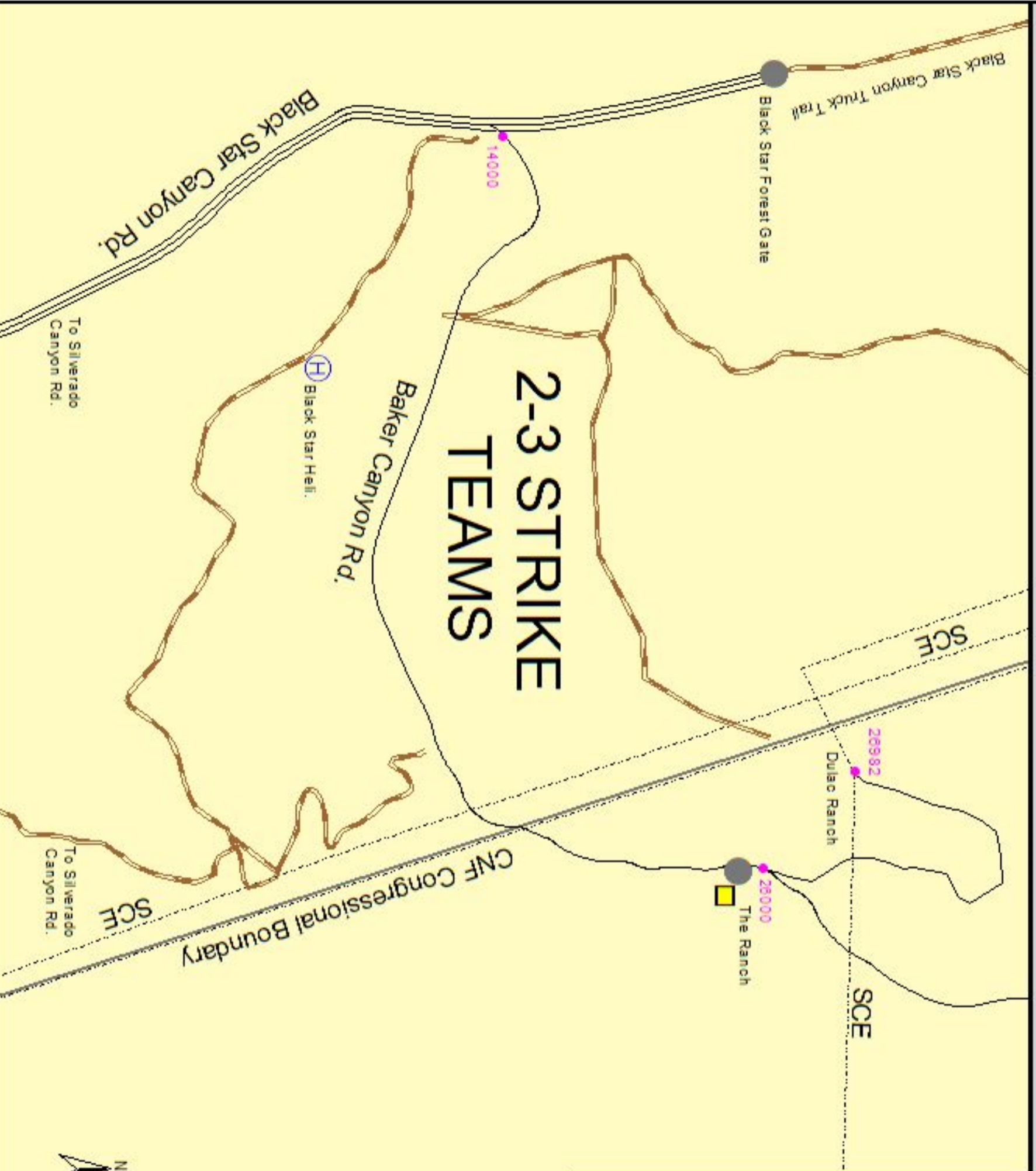


Silverado Canyon-East



Baker Canyon Area

2-3 STRIKE TEAMS

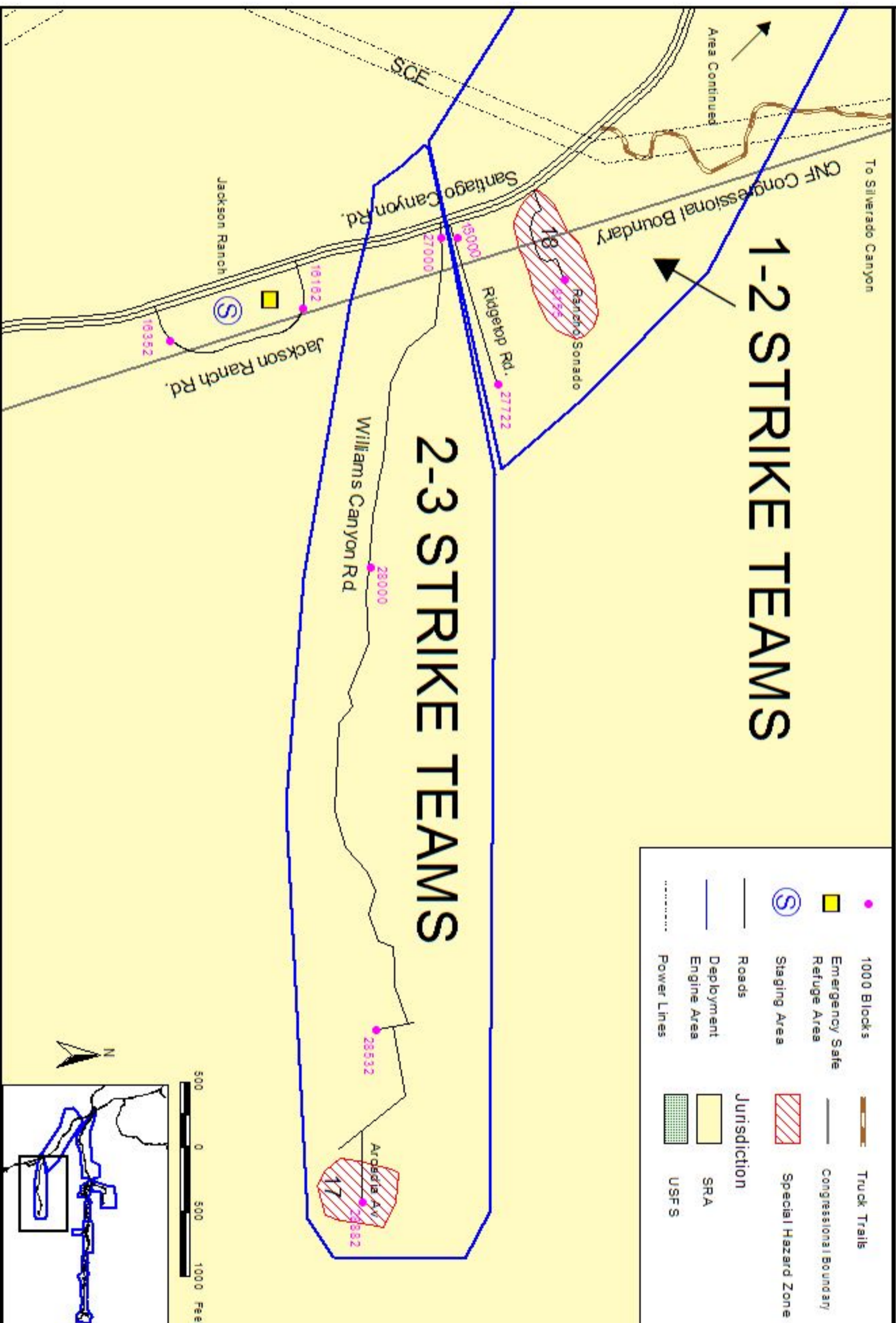


Williams Canyon Area

1-2 STRIKE TEAMS

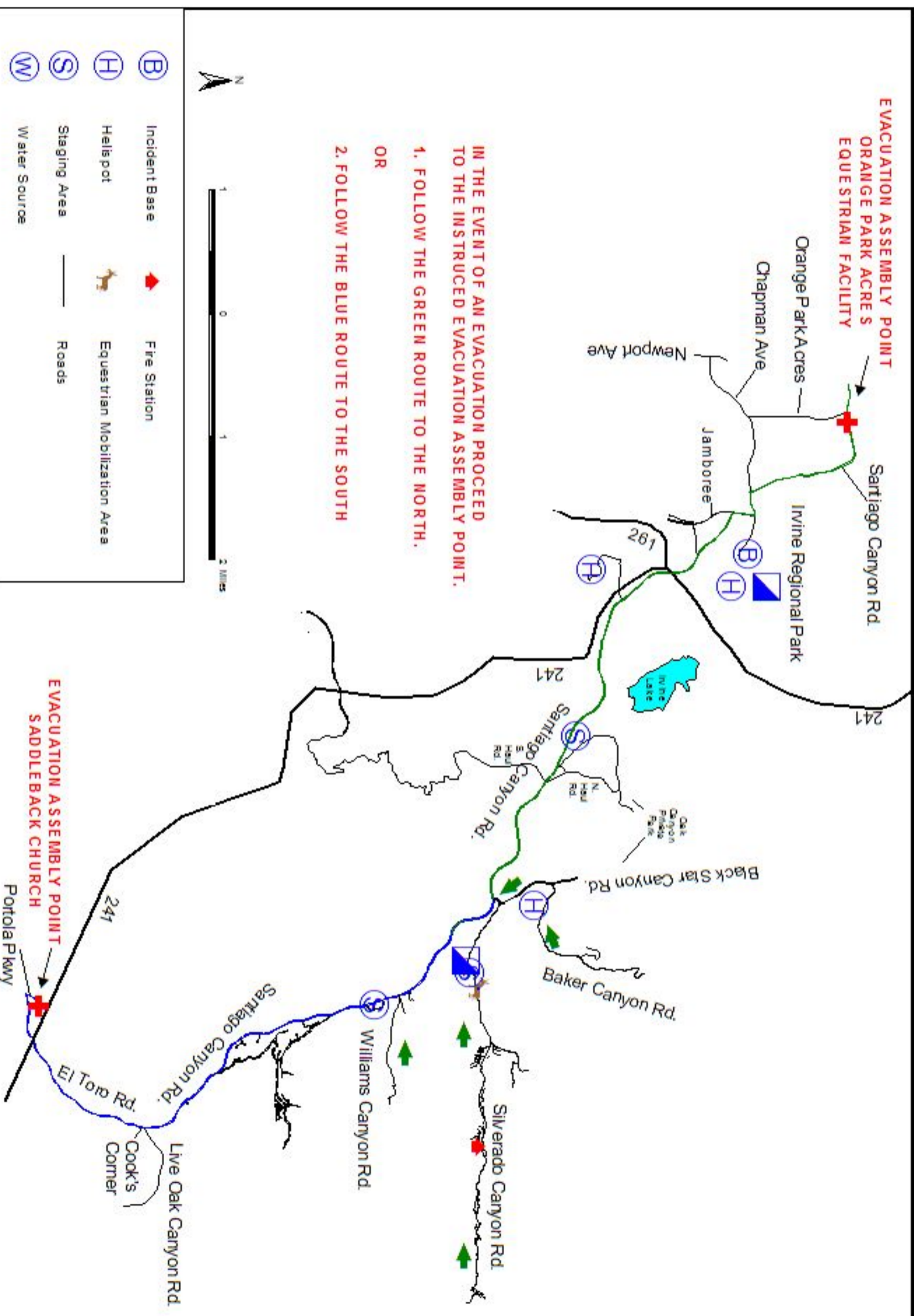
2-3 STRIKE TEAMS

	1000 Blocks		Truck Trails
	Emergency Safe Refuge Area		Congressional Boundary
	Staging Area		Special Hazard Zone
	Roads		Jurisdiction SRA
	Deployment Engine Area		USFS
	Power Lines		



Evacuation Plan

**EVACUATION ASSEMBLY POINT
ORANGE PARK ACRES
EQUESTRIAN FACILITY**



IN THE EVENT OF AN EVACUATION PROCEED TO THE INSTRUCTED EVACUATION ASSEMBLY POINT.

- 1. FOLLOW THE GREEN ROUTE TO THE NORTH.**
- OR**
- 2. FOLLOW THE BLUE ROUTE TO THE SOUTH**

**EVACUATION ASSEMBLY POINT
SADDLEBACK CHURCH**