

Starting a CWPP

After a fire district is selected for beginning a CWPP, some information will need to be collected. Contact your county GIS office to find out if they have updated polygons of the fire district boundaries. If they have not been updated recently, the maps can be made using the boundaries from the NC Department of Insurance, which the Division of Forest Resources already has. This is a good time to find out if the county GIS or emergency management offices have any additional information that may be useful for completing the CWPP, such as latitude and longitude or other information for dry hydrants/water sources, airports, helispots, staging areas, or incident command posts. Most counties are at least beginning to collect this information for FEMA all hazard information.

Online resources:

Airport information <http://www.airnav.com/>
NC Trauma centers <http://www.nctraumacenters.org/>
Specialized burn centers <http://www.burn-recovery.org/burn-centers.htm>

Patrick Nichols at Region 3 is currently making maps for the CWPPs. His mobile phone number is (919) 208-8044. Contact Patrick or your district GISS to make the plotter size map that you will need to take with you to the initial meeting with the fire department.

The map will need to display the fire district boundary, roads, Areas of Concern (AOC) from the Southern Wildfire Risk Assessment (SWRA), and ownership over a USGS topographic map. This will allow you to discuss with the fire department whether or not the AOCs from the SWRA need to be edited and/or named or removed because they are not actually AOCs. Use this initial map to draw out and name any additional AOCs or edit/name existing AOCs, areas where the fire district boundary may not be correct, or infrastructure points. You may want to leave this initial map with the fire department for a few days or take it to one of their weekly meetings to give more people a chance to review and discuss it. As the number of people looking at the map increases, the amount of information you can glean from them increases. Feel free to mark this map up with markers or grease pencils. A new map will be made after the CWPP is completed.

Finalizing the CWPP

CWPPs for each fire district can be finalized individually. After collecting, entering, checking, and printing the information for the CWPP, a series of maps will need to be produced. These are described later.

To make the maps, Patrick or your district GISS will need a copy of the completed CWPP emailed to them to set up a database link with ARCMAP. This link will allow the positions for all the infrastructure points and fire district information collected in the CWPP to be displayed on a map of the fire district.

Under the current request to limit travel and expenses Patrick may not be able to work with everyone face to face. If you have a good working relationship with the county GIS office and they have access to a plotter or your district has a plotter, the electronic files for the maps may be put on the G: drive or burned onto a CD to mail. The electronic files for the plotter size maps are often too large to be emailed.

After the maps are created and printed, a second meeting will need to be held with the fire department that serves the district along with the plan partners that are to sign the completed CWPP. The maps will be presented to the fire department. If additional copies are requested by the plan partners they will also be given copies.

After the printed CWPP is signed by all necessary partners and the maps are turned over, the CWPP is finalized. After the CWPP is finalized, your district or region may want a copy of the database emailed to them to add the GIS data to the district or region map project. A copy of the database will need to be emailed to James Rogers (James.B.Rogers@ncdenr.gov) at the Central Office for the GIS data to be added to the statewide map project.

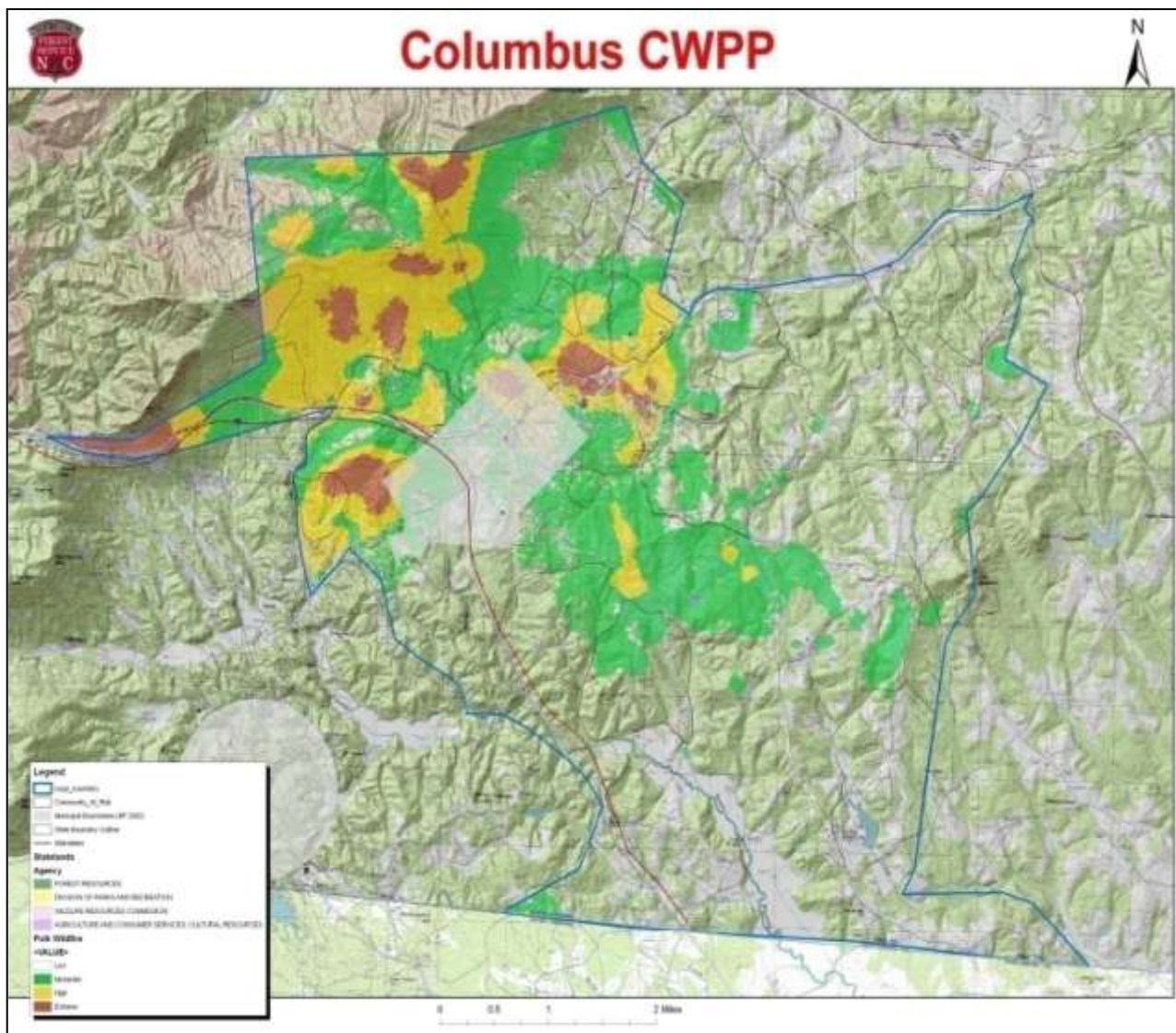
The plan will need to be revised as things change in the fire district or county. Depending on the changes, a full revision with a plan printed and signed will occur at least every five years. The maps may or may not need to be revised depending on what changes occur within the district.

Base Maps:

At a minimum, the base maps should include fire district boundaries, major roads, ICS infrastructure points (water sources, ICP's, etc), land ownership, AOC polygons, and other information that the county wants to add. What has worked in the past is typically one plotter size map and some smaller 8.5 x 11 maps. The plotter size map displays complete infrastructure including topography or an aerial photo with streets, ownership, WFSI or LOC, AOC polygons, and ICS infrastructure points. At least one plotter size map should be printed for the Fire District. They may request more to post one in each of their substations. This is typically what the fire department wants. Discuss the map items with the fire department to find out what they would like to see on their map. We need all the information collected displayed, but we want them to have a map that meets their needs. The smaller 8.5 x 11 maps display individual Areas of Concern (AOCs).

Maps that are used include:

- 1 Plotter size map displaying topography or aerial photo with streets, land ownership, WFSI or LOC, AOC polygons, and Incident Command System (ICS) points (water sources, ICP's, etc).
- Individual maps for Areas of Concern (8.5 x 11). Associated NC Community Assessment forms attached to the individual AOC maps. Copies of these will be kept at the DFR county offices.





Swannanoa CWPP Infrastructure/Susceptibility Index

